

TEST REPORT

Report No.: AZT032011190023C-010

Page 1 of 41

Applicant : Tyco Safety Products (Shanghai) Co., Ltd.
Address : Zone B, Building 2, 88 Wansong Road, Shuyuan Town, Pudong New District,
Shanghai, China
Manufacturer's name : Tyco Safety Products (Shanghai) Co., Ltd.
Address : Zone B, Building 2, 88 Wansong Road, Shuyuan Town, Pudong New District,
Shanghai, China

Report on the submitted samples said to be:

Sample Name : IP CAMERA
Trade Mark : TYCO
Tested model : ISV-X02N003S
Series models : ISA-X02N005SAF, ISA-X04N005SAF, ISV-X02N004S, ISV-X02N005SAF,
ISV-X04N005SAF
Testing Period : October 19, 2020 ~ October 28, 2020
Date of issue : October 28, 2020
Results : Please refer to next page(s).



TEST REQUEST

According to the customer's request, based on the performed tests on submitted sample, the result of Lead, Cadmium, Mercury, Hexavalent Chromium, PBBs, PBDEs, Dibutyl Phthalate(DBP), Benzylbutyl Phthalate(BBP), Bis(2-ethylhexyl) Phthalate(DEHP), Diisobutyl phthalate(DIBP) content comply with the limit as set of RoHS Directive (EU) 2015/863 amending Annex II to Directive 2011/65/EU.

CONCLUSION

PASS

Signed for and on behalf of AZT


Suez Su
Shenzhen AZT Technology Co., Ltd.
深圳安正检测技术有限公司No.513, 514, 808, Huaide Yinshan Building, 107 National Road, Fuwei Community,
Fuyong Street, Baoan District, Shenzhen, Guangdong, China
中国 广东省 深圳市宝安区福永街道福围社区 107 国道旁怀德银山大厦 513, 514, 808
Tel: 0755-23501189, Fax: 0755-23597514, Http: www.azt-tech.com

TEST REPORT

Report No.: AZT032011190023C-010

Page 2 of 41

Results:
A.EU RoHS Directive 2011/65/EU and its amendment directives on XRF

Test method: With reference to IEC 62321-3-1:2013, Screening by X-ray Fluorescence Spectroscopy (XRF)

Seq. No.	Tested Part(s)	Results					
		Cd	Pb	Hg	Cr ^v	Br ^v	
						PBBs	PBDEs
1	White metal	BL	BL	BL	BL	/	/
2	Black metal	BL	BL	BL	BL	/	/
3	Black metal	BL	BL	BL	BL	/	/
4	Silvery metal	BL	BL	BL	BL	/	/
5	Black plastic	BL	BL	BL	BL	X	X
6	Blue plastic	BL	BL	BL	BL	BL	BL
7	Black metal screw	BL	BL	BL	X	/	/
8	Silvery metal screw	BL	BL	BL	BL	/	/
9	Golden metal	BL	OL	BL	BL	/	/
10	Black plastic	BL	BL	BL	BL	BL	BL
11	Silvery metal	BL	BL	BL	BL	/	/
12	Black plastic	BL	BL	BL	BL	BL	BL
13	White plastic	BL	BL	BL	BL	BL	BL
14	Silvery metal	X	BL	BL	BL	/	/
15	Red plastic line	BL	BL	BL	BL	BL	BL
16	Yellow plastic line	BL	BL	BL	BL	BL	BL
17	White plastic line	BL	BL	BL	BL	BL	BL
18	Black plastic line	BL	BL	BL	BL	BL	BL
19	Silvery metal line	BL	BL	BL	BL	/	/
20	Silvery metal	BL	BL	BL	X	/	/
21	Silvery metal	BL	BL	BL	BL	/	/
22	Golden metal	BL	BL	BL	X	/	/
23	Silvery metal	BL	BL	BL	X	/	/
24	Silvery metal	BL	BL	BL	X	/	/
25	Silvery metal spring	BL	BL	BL	X	/	/
26	Silvery metal screw	BL	BL	BL	X	/	/
27	Yellow base band	BL	BL	BL	BL	BL	BL



TEST REPORT

Report No.: AZT032011190023C-010

Page 3 of 41

Seq. No.	Tested Part(s)	Results					
		Cd	Pb	Hg	Cr ^Ⅵ	Br ^Ⅱ	
						PBBs	PBDEs
28	Silvery metal	BL	BL	BL	BL	/	/
29	Silvery metal	BL	BL	BL	X	/	/
30	Golden metal	BL	OL	BL	BL	/	/
31	Copper metal	X	BL	BL	BL	/	/
32	Black metal screw	BL	BL	BL	BL	/	/
33	Silvery metal	BL	BL	BL	X	/	/
34	Silvery metal screw	BL	BL	BL	X	/	/
35	Silvery metal	BL	BL	BL	X	/	/
36	Silvery metal	BL	BL	BL	BL	/	/
37	Silvery metal	BL	BL	BL	X	/	/
38	Golden metal	BL	BL	BL	BL	/	/
39	Golden metal	BL	BL	BL	BL	/	/
40	Silvery metal	BL	BL	BL	X	/	/
41	Silvery metal	BL	BL	BL	X	/	/
42	Copper line	BL	BL	BL	BL	/	/
43	Black magnet	BL	BL	BL	BL	/	/
44	Black plastic	BL	BL	BL	BL	BL	BL
45	Black plastic	BL	BL	BL	BL	BL	BL
46	Yellow plastic	BL	BL	BL	BL	X	X
47	White plastic	BL	BL	BL	BL	X	X
48	White base band	BL	BL	BL	BL	BL	BL
49	White plastic	BL	BL	BL	BL	BL	BL
50	Silvery metal	BL	BL	BL	BL	/	/
51	Black plastic	BL	BL	BL	BL	BL	BL
52	Red plastic line	BL	BL	BL	BL	BL	BL
53	Black plastic line	BL	BL	BL	BL	BL	BL
54	Silvery metal line	BL	BL	BL	BL	/	/
55	Golden metal	BL	OL	BL	BL	/	/
56	Silvery metal	BL	BL	BL	BL	/	/



TEST REPORT

Report No.: AZT032011190023C-010

Page 4 of 41

Seq. No.	Tested Part(s)	Results					
		Cd	Pb	Hg	Cr ^v	Br ^v	
						PBBs	PBDEs
57	Copper metal	BL	BL	BL	BL	/	/
58	Black metal	BL	BL	BL	X	/	/
59	Transparent plastic	BL	BL	BL	BL	BL	BL
60	Black plastic	BL	BL	BL	BL	BL	BL
61	Glass	BL	BL	BL	BL	/	/
62	Black plastic	BL	BL	BL	BL	BL	BL
63	IC	BL	BL	BL	BL	X	X
64	White plastic	BL	BL	BL	BL	BL	BL
65	Black plastic	BL	BL	BL	BL	BL	BL
66	Silvery metal	BL	BL	BL	BL	/	/
67	White plastic	BL	BL	BL	BL	BL	BL
68	Silvery metal	BL	BL	BL	BL	/	/
69	Silvery metal	X	BL	BL	BL	/	/
70	IC	BL	BL	BL	BL	BL	BL
71	IC	BL	BL	BL	BL	BL	BL
72	IC	BL	BL	BL	BL	BL	BL
73	Audion	BL	BL	BL	BL	BL	BL
74	Diode	BL	BL	BL	BL	BL	BL
75	Chip capacitance	BL	BL	BL	BL	BL	BL
76	Chip resistance	BL	BL	BL	BL	BL	BL
77	PCB	BL	BL	BL	BL	X	X
78	Solder	BL	BL	BL	BL	/	/
79	Green plastic	BL	BL	BL	BL	X	X
80	Orange plastic	BL	BL	BL	BL	BL	BL
81	Silvery metal	BL	BL	BL	X	/	/
82	Black plastic(Switch)	BL	BL	BL	BL	X	X
83	Black plastic(Switch)	BL	BL	BL	BL	X	X
84	Silvery metal(Switch)	BL	BL	BL	BL	/	/



TEST REPORT

Report No.: AZT032011190023C-010

Page 5 of 41

Seq. No.	Tested Part(s)	Results					
		Cd	Pb	Hg	Cr ^v	Br ^v	
						PBBs	PBDEs
85	Silvery metal(Switch)	BL	BL	BL	BL	/	/
86	Silvery metal(Switch)	BL	BL	BL	BL	/	/
87	Black plastic	BL	BL	BL	BL	BL	BL
88	LED	BL	BL	BL	BL	X	X
89	Green plastic	BL	BL	BL	BL	BL	BL
90	Silvery metal	BL	BL	BL	BL	/	/
91	Yellow tape(Inductance)	BL	BL	BL	BL	X	X
92	Black plastic(Inductance)	BL	BL	BL	BL	BL	BL
93	Grey ceramic(Inductance)	BL	BL	BL	BL	BL	BL
94	Copper line(Inductance)	BL	BL	BL	BL	/	/
95	Black plastic(Capacitance)	BL	BL	BL	BL	BL	BL
96	Black plastic(Capacitance)	BL	BL	BL	BL	BL	BL
97	Yellow paper(Capacitance)	BL	BL	BL	BL	BL	BL
98	Yellow tape(Capacitance)	BL	BL	BL	BL	BL	BL
99	Silvery metal(Capacitance)	BL	BL	BL	BL	/	/
100	Silvery grey metal sheet(Capacitance)	BL	BL	BL	BL	/	/
101	Grey metal sheet(Capacitance)	BL	BL	BL	BL	/	/
102	Silvery metal(Capacitance)	BL	BL	BL	BL	/	/
103	IC	BL	BL	BL	BL	BL	BL
104	IC	BL	BL	BL	BL	BL	BL
105	Diode	BL	BL	BL	BL	BL	BL
106	Capacitance	BL	BL	BL	BL	X	X
107	Capacitance	BL	BL	BL	BL	BL	BL
108	Inductance	BL	BL	BL	BL	BL	BL
109	Chip capacitance	BL	BL	BL	BL	BL	BL
110	Chip resistance	BL	BL	BL	BL	BL	BL
111	Black plastic	BL	BL	BL	BL	X	X
112	Silvery metal	BL	BL	OL	BL	/	/
113	IC	BL	BL	BL	BL	BL	BL


 Shenzhen AZT Technology Co., Ltd.
深圳安正检测技术有限公司

 No.513, 514, 808, Huaide Yinshan Building, 107 National Road, Fuwei Community,
Fuyong Street, Baoan District, Shenzhen, Guangdong, China
中国 广东省 深圳市宝安区福永街道福围社区 107 国道旁怀德银山大厦 513, 514, 808
Tel: 0755-23501189, Fax: 0755-23597514, Http: www.azt-tech.com

TEST REPORT

Report No.: AZT032011190023C-010

Page 6 of 41

Seq. No.	Tested Part(s)	Results					
		Cd	Pb	Hg	Cr▼	Br▼	
						PBBs	PBDEs
114	IC	BL	BL	BL	BL	BL	BL
115	Audion	BL	BL	BL	BL	BL	BL
116	PCB	BL	BL	OL	BL	X	X
117	Solder	BL	BL	BL	BL	/	/
118	Silvery metal	BL	BL	BL	BL	/	/
119	Silvery metal	BL	BL	BL	BL	/	/
120	Silvery metal	BL	BL	BL	BL	/	/
121	White plastic	BL	BL	BL	BL	BL	BL
122	Silvery metal(USB)	BL	BL	BL	BL	/	/
123	Silvery metal(USB)	BL	BL	BL	BL	/	/
124	Black plastic(USB)	BL	BL	BL	BL	BL	BL
125	Silvery metal	BL	BL	BL	BL	/	/
126	Silvery metal	BL	BL	BL	BL	/	/
127	Black plastic	BL	BL	BL	BL	X	X
128	Green LED	BL	BL	BL	BL	BL	BL
129	Yellow LED	BL	BL	BL	BL	BL	BL
130	Black plastic	BL	BL	BL	BL	X	X
131	Silvery metal	BL	BL	BL	BL	/	/
132	IC	BL	BL	BL	BL	BL	BL
133	IC	BL	BL	BL	BL	BL	BL
134	IC	BL	BL	BL	BL	BL	BL
135	IC	BL	BL	BL	BL	BL	BL
136	Diode	BL	BL	BL	BL	BL	BL
137	Crystal oscillator	BL	BL	BL	X	BL	BL
138	Black plastic	BL	BL	BL	BL	X	X
139	Silvery metal	BL	BL	OL	BL	/	/
140	White plastic	BL	BL	BL	BL	BL	BL
141	Black plastic	BL	BL	BL	BL	BL	BL
142	Silvery metal	BL	BL	BL	BL	/	/
143	IC	BL	BL	BL	BL	BL	BL
144	IC	BL	BL	BL	BL	BL	BL


 Shenzhen AZT Technology Co., Ltd.
深圳安正检测技术有限公司

 No.513, 514, 808, Huaide Yinshan Building, 107 National Road, Fuwei Community,
Fuyong Street, Baoan District, Shenzhen, Guangdong, China
中国 广东省 深圳市宝安区福永街道福围社区 107 国道旁怀德银山大厦 513, 514, 808
Tel: 0755-23501189, Fax: 0755-23597514, Http: www.azt-tech.com

TEST REPORT

Report No.: AZT032011190023C-010

Page 7 of 41

Seq. No.	Tested Part(s)	Results					
		Cd	Pb	Hg	Cr▼	Br▼	
						PBBs	PBDEs
145	Inductance	BL	BL	BL	BL	BL	BL
146	Chip capacitance	BL	BL	BL	BL	BL	BL
147	Chip resistance	BL	BL	BL	BL	BL	BL
148	PCB	BL	BL	OL	BL	X	X
149	Solder	BL	BL	BL	BL	/	/
150	Black plastic	BL	BL	BL	BL	X	X
151	Silvery metal	BL	BL	BL	BL	/	/
152	Silvery metal	BL	BL	BL	X	/	/
153	Silvery metal	BL	BL	BL	BL	/	/
154	Silvery metal	X	BL	BL	BL	/	/
155	Black plastic	BL	BL	BL	BL	BL	BL
156	IC	BL	BL	BL	BL	BL	BL
157	White plastic	BL	BL	BL	BL	BL	BL
158	Black plastic	BL	BL	BL	BL	BL	BL
159	Silvery metal	BL	BL	BL	BL	/	/
160	White plastic	BL	BL	BL	BL	BL	BL
161	Silvery metal	BL	BL	BL	BL	/	/
162	Black plastic(Switch)	BL	BL	BL	BL	BL	BL
163	Black plastic(Switch)	BL	BL	BL	BL	BL	BL
164	Silvery metal(Switch)	BL	BL	BL	X	/	/
165	Silvery metal(Switch)	BL	BL	BL	X	/	/
166	Silvery metal(Switch)	BL	BL	BL	BL	/	/
167	Black plastic	BL	BL	BL	BL	BL	BL
168	Silvery metal	BL	BL	BL	BL	/	/
169	Silvery metal	BL	BL	BL	BL	/	/
170	IC	BL	BL	BL	BL	BL	BL
171	IC	BL	BL	BL	BL	BL	BL
172	IC	BL	BL	BL	BL	BL	BL
173	IC	BL	BL	BL	BL	BL	BL
174	IC	BL	BL	BL	BL	BL	BL
175	IC	BL	BL	BL	BL	BL	BL
176	Audion	BL	BL	BL	BL	BL	BL
177	Inductance	BL	BL	BL	BL	BL	BL
178	Crystal oscillator	BL	BL	BL	BL	BL	BL
179	PCB	BL	BL	BL	BL	X	X
180	Solder	BL	BL	BL	BL	/	/


 Shenzhen AZT Technology Co., Ltd.
深圳安正检测技术有限公司

 No.513, 514, 808, Huaide Yinshan Building, 107 National Road, Fuwei Community,
Fuyong Street, Baoan District, Shenzhen, Guangdong, China
中国 广东省 深圳市宝安区福永街道福围社区 107 国道旁怀德银山大厦 513, 514, 808
Tel: 0755-23501189, Fax: 0755-23597514, Http: www.azt-tech.com

TEST REPORT

Report No.: AZT032011190023C-010

Page 8 of 41

Note:

- (1) Results were obtained by XRF for primary screening, and further chemical testing by ICP (for Cd, Pb, Hg), UV-Vis (for Cr(VI)) and GC-MS (for PBBs, PBDEs) are recommended to be performed, if the concentration exceeds the below warning value according to IEC 62321-3-1:2013.

Element	Unit	Non-metal	Metal	Composite Material
Cd	mg/kg	$BL \leq 70 - 3\sigma < X < 130 + 3\sigma \leq OL$	$BL \leq 70 - 3\sigma < X < 130 + 3\sigma \leq OL$	$BL \leq 50 - 3\sigma < X < 150 + 3\sigma \leq OL$
Pb	mg/kg	$BL \leq 700 - 3\sigma < X < 1300 + 3\sigma \leq OL$	$BL \leq 700 - 3\sigma < X < 1300 + 3\sigma \leq OL$	$BL \leq 500 - 3\sigma < X < 1500 + 3\sigma \leq OL$
Hg	mg/kg	$BL \leq 700 - 3\sigma < X < 1300 + 3\sigma \leq OL$	$BL \leq 700 - 3\sigma < X < 1300 + 3\sigma \leq OL$	$BL \leq 500 - 3\sigma < X < 1500 + 3\sigma \leq OL$
Cr	mg/kg	$BL \leq 700 - 3\sigma < X$	$BL \leq 700 - 3\sigma < X$	$BL \leq 500 - 3\sigma < X$
Br	mg/kg	$BL \leq 300 - 3\sigma < X$	--	$BL \leq 250 - 3\sigma < X$

Note:

- BL = Below Limit
 OL = Over Limit
 X = Inconclusive

- (2) The XRF screening test for RoHS elements – The reading may be different to the actual content in the sample be of non-uniformity composition.
- (3) The maximum permissible limit is quoted from the document 2015/863/EC amending RoHS directive 2011/65/EU:
- (4) ▼=For restricted substances PBBs and PBDEs, the results show the total Br content, The restricted substance was Cr(VI), and the results showed the total Cr content



TEST REPORT

Report No.: AZT032011190023C-010

Page 9 of 41

RoHS Restricted Substances	Maximum Concentration Value (mg/kg) (by weight in homogenous materials)
Cadmium (Cd)	100
Lead (Pb)	1000
Mercury (Hg)	1000
Hexavalent Chromium (Cr(VI))	1000
Polybrominated biphenyls (PBBs)	1000
Polybrominated diphenylethers (PBDEs)	1000
Dibutyl Phthalate(DBP)	1000
Benzylbutyl Phthalate(BBP)	1000
Bis(2-ethylhexyl) Phthalate(DEHP)	1000
Diisobutyl phthalate(DIBP)	1000

Disclaimers:

This XRF Screening report is for reference purposes only. The applicant shall make its/his/her own judgment as to whether the information provided in this XRF screening report is sufficient for its/his/her purposes.

The result shown in this XRF screening report will differ based on various factors, including but not limited to, the sample size, thickness, area, surface flatness, equipment parameters and matrix effect (e.g. plastic, rubber, metal, glass, ceramic etc.). Further wet chemical pre-treatment with relevant chemical equipment analysis are required to obtain quantitative data.



TEST REPORT

Report No.: AZT032011190023C-010

Page 10 of 41

B. EU RoHS Directive 2011/65/EU and its amendment Directives 2015/863/EU on Lead, Cadmium, Mercury, Hexavalent Chromium, PBBs, PBDEs, DBP, BBP, DEHP, DIBP content.

Test method:

Lead(Pb) & Cadmium(Cd) Content:

With reference to IEC 62321-5:2013, by acid digestion and analysis was performed by inductively coupled plasma atomic emission spectrometer (ICP-OES)

Mercury(Hg) Content:

With reference to IEC 62321-4:2013+AMD1:2017 CSV, by acid digestion and analysis was performed by inductively coupled plasma atomic emission spectrometer (ICP-OES)

Hexavalent Chromium(Cr⁶⁺) Content:

With reference to IEC 62321-7-1:2015 or IEC 62321-7-2:2017, by alkaline digestion and analysis was performed by UV-visible spectrophotometer (UV-Vis)

PBBs & PBDEs Content:

With reference to IEC 62321-6:2015, by solvent extraction and analysis was performed by gas chromatographic-mass spectrometer (GC-MS)

BBP DBP DEHP & DIBP Content:

With reference to IEC 62321-8:2017, by solvent extraction and analysis was performed by gas chromatographic-mass spectrometer (GC-MS)

1) The test results of Lead(Pb), Cadmium(Cd), Mercury(Hg)

Item	Unit	MDL	Results			Limit
			09	30	55	
Lead(Pb)	mg/kg	2	23430#3	24600#3	23210#3	1000

Item	Unit	MDL	Results				Limit
			14	31	69	154	
Cadmium(Cd)	mg/kg	2	N.D.	N.D.	N.D.	N.D.	100

Item	Unit	MDL	Results				Limit
			112	116	139	148	
Mercury(Hg)	mg/kg	2	N.D.	N.D.	N.D.	N.D.	1000



TEST REPORT

Report No.: AZT032011190023C-010

Page 11 of 41

2) The test results of Hexavalent Chromium (Cr⁶⁺)

Item	Unit	MDL	Results			Limit
			07	20	23	
Hexavalent Chromium(Cr(VI)) ▼	ug/cm ²	0.10	Negative	Negative	Negative	-

Item	Unit	MDL	Results			Limit
			24	25	26	
Hexavalent Chromium(Cr(VI)) ▼	ug/cm ²	0.10	Negative	Negative	Negative	-

Item	Unit	MDL	Results			Limit
			29	33	34	
Hexavalent Chromium(Cr(VI)) ▼	ug/cm ²	0.10	Negative	Negative	Negative	-

Item	Unit	MDL	Results			Limit
			35	37	40	
Hexavalent Chromium(Cr(VI)) ▼	ug/cm ²	0.10	Negative	Negative	Negative	-

Item	Unit	MDL	Results			Limit
			41	58	81	
Hexavalent Chromium(Cr(VI)) ▼	ug/cm ²	0.10	Negative	Negative	Negative	-

Item	Unit	MDL	Results			Limit
			152	164	165	
Hexavalent Chromium(Cr(VI)) ▼	ug/cm ²	0.10	Negative	Negative	Negative	-

Item	Unit	MDL	Results			Limit
			137			
Hexavalent Chromium(Cr(VI))	mg/kg	5	Negative			1000



TEST REPORT

Report No.: AZT032011190023C-010

Page 12 of 41

Note:

- MDL = Method Detection Limit
- /= Not apply
- LOQ = Limit of Quantification, The LOQ of Hexavalent chromium is 0.10 $\mu\text{g}/\text{cm}^2$
- mg/kg = ppm=parts per million
- N.D.=Not Detected(<MDL or LOQ)
- ▼ = a. The sample is positive for Cr(VI) if the Cr(VI) concentration is greater than 0.13 $\mu\text{g}/\text{cm}^2$. The sample coating is considered to contain Cr(VI)
b. The sample is negative for Cr(VI) if Cr(VI) is N.D.(concentration less than 0.10 $\mu\text{g}/\text{cm}^2$). The sample coating is considered a non- Cr(VI) based coating
c. The result between 0.10 $\mu\text{g}/\text{cm}^2$ and 0.13 $\mu\text{g}/\text{cm}^2$ is considered to be inconclusive, unavoidable coating variations may influence the determination

- #1 According to RoHS directive 2011/65/EU and its amendments, Lead is exempted in glass of cathode ray tubes, electronic components and fluorescent tubes.
- #2 According to RoHS directive 2011/65/EU and its amendments, Lead is exempted in electronic ceramic parts (e.g. piezoelectronic devices).
- #3 According to RoHS directive 2011/65/EU and its amendments, Lead is exempted as an alloying element in Copper containing up to 4% (40000ppm) by weight.
- #4 According to RoHS directive 2011/65/EU and its amendments, Lead is exempted in high melting temperature type solders (i.e. lead-based alloys containing 85 % by weight or more lead).
- #5 According to the statement provided by the customer, according to RoHS directive 2011/65/EU and its amendments, Lead is exempted as an alloying element in Aluminum containing up to 0.4% (4000ppm) by weight.
- #6 According to the statement provided by the customer, according to RoHS directive 2011/65/EU and its amendments, Cadmium and its compounds in electrical contact is exempted.
- #7 According to the statement provided by the customer, according to RoHS directive 2011/65/EU and its Amendments, Lead is exempted in steel for machining purposes and in galvanised steel containing up to 0.35% (3500ppm) by weight.



TEST REPORT

Report No.: AZT032011190023C-010

Page 13 of 41

3) The test results of DBP、BBP、DEHP & DIBP

Item	Unit	MDL	Results				Limit
			5	6	10	12	
Dibutyl Phthalate(DBP)	mg/kg	50	N.D.	N.D.	N.D.	N.D.	1000
Benzylbutyl Phthalate(BBP)	mg/kg	50	N.D.	N.D.	N.D.	N.D.	1000
Bis(2-ethylhexyl) Phthalate(DEHP)	mg/kg	50	N.D.	N.D.	N.D.	N.D.	1000
Diisobutyl phthalate(DIBP)	mg/kg	50	N.D.	N.D.	N.D.	N.D.	1000

Item	Unit	MDL	Results				Limit
			13	15	16	17	
Dibutyl Phthalate(DBP)	mg/kg	50	N.D.	N.D.	N.D.	N.D.	1000
Benzylbutyl Phthalate(BBP)	mg/kg	50	N.D.	N.D.	N.D.	N.D.	1000
Bis(2-ethylhexyl) Phthalate(DEHP)	mg/kg	50	N.D.	N.D.	N.D.	N.D.	1000
Diisobutyl phthalate(DIBP)	mg/kg	50	N.D.	N.D.	N.D.	N.D.	1000

Item	Unit	MDL	Results				Limit
			18	27	44	45	
Dibutyl Phthalate(DBP)	mg/kg	50	N.D.	N.D.	N.D.	N.D.	1000
Benzylbutyl Phthalate(BBP)	mg/kg	50	N.D.	N.D.	N.D.	N.D.	1000
Bis(2-ethylhexyl) Phthalate(DEHP)	mg/kg	50	N.D.	N.D.	N.D.	N.D.	1000
Diisobutyl phthalate(DIBP)	mg/kg	50	N.D.	N.D.	N.D.	N.D.	1000

Item	Unit	MDL	Results				Limit
			46	47	48	49	
Dibutyl Phthalate(DBP)	mg/kg	50	N.D.	N.D.	N.D.	N.D.	1000
Benzylbutyl Phthalate(BBP)	mg/kg	50	N.D.	N.D.	N.D.	N.D.	1000
Bis(2-ethylhexyl) Phthalate(DEHP)	mg/kg	50	N.D.	N.D.	N.D.	N.D.	1000
Diisobutyl phthalate(DIBP)	mg/kg	50	N.D.	N.D.	N.D.	N.D.	1000



TEST REPORT

Report No.: AZT032011190023C-010

Page 14 of 41

Item	Unit	MDL	Results				Limit
			51	52	53	59	
Dibutyl Phthalate(DBP)	mg/kg	50	N.D.	N.D.	N.D.	N.D.	1000
Benzylbutyl Phthalate(BBP)	mg/kg	50	N.D.	N.D.	N.D.	N.D.	1000
Bis(2-ethylhexyl) Phthalate(DEHP)	mg/kg	50	N.D.	N.D.	N.D.	N.D.	1000
Diisobutyl phthalate(DIBP)	mg/kg	50	N.D.	N.D.	N.D.	N.D.	1000

Item	Unit	MDL	Results				Limit
			60	62	63	64	
Dibutyl Phthalate(DBP)	mg/kg	50	N.D.	N.D.	N.D.	N.D.	1000
Benzylbutyl Phthalate(BBP)	mg/kg	50	N.D.	N.D.	N.D.	N.D.	1000
Bis(2-ethylhexyl) Phthalate(DEHP)	mg/kg	50	N.D.	N.D.	N.D.	N.D.	1000
Diisobutyl phthalate(DIBP)	mg/kg	50	N.D.	N.D.	N.D.	N.D.	1000

Item	Unit	MDL	Results				Limit
			65	67	70	71	
Dibutyl Phthalate(DBP)	mg/kg	50	N.D.	N.D.	N.D.	N.D.	1000
Benzylbutyl Phthalate(BBP)	mg/kg	50	N.D.	N.D.	N.D.	N.D.	1000
Bis(2-ethylhexyl) Phthalate(DEHP)	mg/kg	50	N.D.	N.D.	N.D.	N.D.	1000
Diisobutyl phthalate(DIBP)	mg/kg	50	N.D.	N.D.	N.D.	N.D.	1000

Item	Unit	MDL	Results				Limit
			72	73	74	75	
Dibutyl Phthalate(DBP)	mg/kg	50	N.D.	N.D.	N.D.	N.D.	1000
Benzylbutyl Phthalate(BBP)	mg/kg	50	N.D.	N.D.	N.D.	N.D.	1000
Bis(2-ethylhexyl) Phthalate(DEHP)	mg/kg	50	N.D.	N.D.	N.D.	N.D.	1000
Diisobutyl phthalate(DIBP)	mg/kg	50	N.D.	N.D.	N.D.	N.D.	1000


 Shenzhen AZT Technology Co., Ltd.
深圳安正检测技术有限公司

 No.513, 514, 808, Huaide Yinshan Building, 107 National Road, Fuwei Community,
Fuyong Street, Baoan District, Shenzhen, Guangdong, China
中国 广东省 深圳市宝安区福永街道福围社区 107 国道旁怀德银山大厦 513, 514, 808
Tel: 0755-23501189, Fax: 0755-23597514, Http: www.azt-tech.com

TEST REPORT

Report No.: AZT032011190023C-010

Page 15 of 41

Item	Unit	MDL	Results				Limit
			76	77	79	80	
Dibutyl Phthalate(DBP)	mg/kg	50	N.D.	N.D.	N.D.	N.D.	1000
Benzylbutyl Phthalate(BBP)	mg/kg	50	N.D.	N.D.	N.D.	N.D.	1000
Bis(2-ethylhexyl) Phthalate(DEHP)	mg/kg	50	N.D.	N.D.	N.D.	N.D.	1000
Diisobutyl phthalate(DIBP)	mg/kg	50	N.D.	N.D.	N.D.	N.D.	1000

Item	Unit	MDL	Results				Limit
			82	83	87	88	
Dibutyl Phthalate(DBP)	mg/kg	50	N.D.	N.D.	N.D.	N.D.	1000
Benzylbutyl Phthalate(BBP)	mg/kg	50	N.D.	N.D.	N.D.	N.D.	1000
Bis(2-ethylhexyl) Phthalate(DEHP)	mg/kg	50	N.D.	N.D.	N.D.	N.D.	1000
Diisobutyl phthalate(DIBP)	mg/kg	50	N.D.	N.D.	N.D.	N.D.	1000

Item	Unit	MDL	Results				Limit
			89	91	92	93	
Dibutyl Phthalate(DBP)	mg/kg	50	N.D.	N.D.	N.D.	N.D.	1000
Benzylbutyl Phthalate(BBP)	mg/kg	50	N.D.	N.D.	N.D.	N.D.	1000
Bis(2-ethylhexyl) Phthalate(DEHP)	mg/kg	50	N.D.	N.D.	N.D.	N.D.	1000
Diisobutyl phthalate(DIBP)	mg/kg	50	N.D.	N.D.	N.D.	N.D.	1000

Item	Unit	MDL	Results				Limit
			95	96	97	98	
Dibutyl Phthalate(DBP)	mg/kg	50	N.D.	N.D.	N.D.	N.D.	1000
Benzylbutyl Phthalate(BBP)	mg/kg	50	N.D.	N.D.	N.D.	N.D.	1000
Bis(2-ethylhexyl) Phthalate(DEHP)	mg/kg	50	N.D.	N.D.	N.D.	N.D.	1000
Diisobutyl phthalate(DIBP)	mg/kg	50	N.D.	N.D.	N.D.	N.D.	1000



TEST REPORT

Report No.: AZT032011190023C-010

Page 16 of 41

Item	Unit	MDL	Results				Limit
			103	104	105	106	
Dibutyl Phthalate(DBP)	mg/kg	50	N.D.	N.D.	N.D.	N.D.	1000
Benzylbutyl Phthalate(BBP)	mg/kg	50	N.D.	N.D.	N.D.	N.D.	1000
Bis(2-ethylhexyl) Phthalate(DEHP)	mg/kg	50	N.D.	N.D.	N.D.	N.D.	1000
Diisobutyl phthalate(DIBP)	mg/kg	50	N.D.	N.D.	N.D.	N.D.	1000

Item	Unit	MDL	Results				Limit
			107	108	109	110	
Dibutyl Phthalate(DBP)	mg/kg	50	N.D.	N.D.	N.D.	N.D.	1000
Benzylbutyl Phthalate(BBP)	mg/kg	50	N.D.	N.D.	N.D.	N.D.	1000
Bis(2-ethylhexyl) Phthalate(DEHP)	mg/kg	50	N.D.	N.D.	N.D.	N.D.	1000
Diisobutyl phthalate(DIBP)	mg/kg	50	N.D.	N.D.	N.D.	N.D.	1000

Item	Unit	MDL	Results				Limit
			111	113	114	115	
Dibutyl Phthalate(DBP)	mg/kg	50	N.D.	N.D.	N.D.	N.D.	1000
Benzylbutyl Phthalate(BBP)	mg/kg	50	N.D.	N.D.	N.D.	N.D.	1000
Bis(2-ethylhexyl) Phthalate(DEHP)	mg/kg	50	N.D.	N.D.	N.D.	N.D.	1000
Diisobutyl phthalate(DIBP)	mg/kg	50	N.D.	N.D.	N.D.	N.D.	1000

Item	Unit	MDL	Results				Limit
			116	121	124	127	
Dibutyl Phthalate(DBP)	mg/kg	50	N.D.	N.D.	N.D.	N.D.	1000
Benzylbutyl Phthalate(BBP)	mg/kg	50	N.D.	N.D.	N.D.	N.D.	1000
Bis(2-ethylhexyl) Phthalate(DEHP)	mg/kg	50	N.D.	N.D.	N.D.	N.D.	1000
Diisobutyl phthalate(DIBP)	mg/kg	50	N.D.	N.D.	N.D.	N.D.	1000



TEST REPORT

Report No.: AZT032011190023C-010

Page 17 of 41

Item	Unit	MDL	Results				Limit
			128	129	130	132	
Dibutyl Phthalate(DBP)	mg/kg	50	N.D.	N.D.	N.D.	N.D.	1000
Benzylbutyl Phthalate(BBP)	mg/kg	50	N.D.	N.D.	N.D.	N.D.	1000
Bis(2-ethylhexyl) Phthalate(DEHP)	mg/kg	50	N.D.	N.D.	N.D.	N.D.	1000
Diisobutyl phthalate(DIBP)	mg/kg	50	N.D.	N.D.	N.D.	N.D.	1000

Item	Unit	MDL	Results				Limit
			133	134	135	136	
Dibutyl Phthalate(DBP)	mg/kg	50	N.D.	N.D.	N.D.	N.D.	1000
Benzylbutyl Phthalate(BBP)	mg/kg	50	N.D.	N.D.	N.D.	N.D.	1000
Bis(2-ethylhexyl) Phthalate(DEHP)	mg/kg	50	N.D.	N.D.	N.D.	N.D.	1000
Diisobutyl phthalate(DIBP)	mg/kg	50	N.D.	N.D.	N.D.	N.D.	1000

Item	Unit	MDL	Results				Limit
			137	138	140	141	
Dibutyl Phthalate(DBP)	mg/kg	50	N.D.	N.D.	N.D.	N.D.	1000
Benzylbutyl Phthalate(BBP)	mg/kg	50	N.D.	N.D.	N.D.	N.D.	1000
Bis(2-ethylhexyl) Phthalate(DEHP)	mg/kg	50	N.D.	N.D.	N.D.	N.D.	1000
Diisobutyl phthalate(DIBP)	mg/kg	50	N.D.	N.D.	N.D.	N.D.	1000

Item	Unit	MDL	Results				Limit
			143	144	145	146	
Dibutyl Phthalate(DBP)	mg/kg	50	N.D.	N.D.	N.D.	N.D.	1000
Benzylbutyl Phthalate(BBP)	mg/kg	50	N.D.	N.D.	N.D.	N.D.	1000
Bis(2-ethylhexyl) Phthalate(DEHP)	mg/kg	50	N.D.	N.D.	N.D.	N.D.	1000
Diisobutyl phthalate(DIBP)	mg/kg	50	N.D.	N.D.	N.D.	N.D.	1000



TEST REPORT

Report No.: AZT032011190023C-010

Page 18 of 41

Item	Unit	MDL	Results				Limit
			147	148	150	155	
Dibutyl Phthalate(DBP)	mg/kg	50	N.D.	N.D.	N.D.	N.D.	1000
Benzylbutyl Phthalate(BBP)	mg/kg	50	N.D.	N.D.	N.D.	N.D.	1000
Bis(2-ethylhexyl) Phthalate(DEHP)	mg/kg	50	N.D.	N.D.	N.D.	N.D.	1000
Diisobutyl phthalate(DIBP)	mg/kg	50	N.D.	N.D.	N.D.	N.D.	1000

Item	Unit	MDL	Results				Limit
			156	157	158	160	
Dibutyl Phthalate(DBP)	mg/kg	50	N.D.	N.D.	N.D.	N.D.	1000
Benzylbutyl Phthalate(BBP)	mg/kg	50	N.D.	N.D.	N.D.	N.D.	1000
Bis(2-ethylhexyl) Phthalate(DEHP)	mg/kg	50	N.D.	N.D.	N.D.	N.D.	1000
Diisobutyl phthalate(DIBP)	mg/kg	50	N.D.	N.D.	N.D.	N.D.	1000

Item	Unit	MDL	Results					Limit
			162	163	167	170	171	
Dibutyl Phthalate(DBP)	mg/kg	50	N.D.	N.D.	N.D.	N.D.	N.D.	1000
Benzylbutyl Phthalate(BBP)	mg/kg	50	N.D.	N.D.	N.D.	N.D.	N.D.	1000
Bis(2-ethylhexyl) Phthalate(DEHP)	mg/kg	50	N.D.	N.D.	N.D.	N.D.	N.D.	1000
Diisobutyl phthalate(DIBP)	mg/kg	50	N.D.	N.D.	N.D.	N.D.	N.D.	1000



TEST REPORT

Report No.: AZT032011190023C-010

Page 19 of 41

Item	Unit	MDL	Results					Limit
			172	173	174	175	176	
Dibutyl Phthalate(DBP)	mg/kg	50	N.D.	N.D.	N.D.	N.D.	N.D.	1000
Benzylbutyl Phthalate(BBP)	mg/kg	50	N.D.	N.D.	N.D.	N.D.	N.D.	1000
Bis(2-ethylhexyl) Phthalate(DEHP)	mg/kg	50	N.D.	N.D.	N.D.	N.D.	N.D.	1000
Diisobutyl phthalate(DIBP)	mg/kg	50	N.D.	N.D.	N.D.	N.D.	N.D.	1000

Item	Unit	MDL	Results			Limit
			177	178	179	
Dibutyl Phthalate(DBP)	mg/kg	50	N.D.	N.D.	N.D.	1000
Benzylbutyl Phthalate(BBP)	mg/kg	50	N.D.	N.D.	N.D.	1000
Bis(2-ethylhexyl) Phthalate(DEHP)	mg/kg	50	N.D.	N.D.	N.D.	1000
Diisobutyl phthalate(DIBP)	mg/kg	50	N.D.	N.D.	N.D.	1000



TEST REPORT

Report No.: AZT032011190023C-010

Page 20 of 41

4) The test results of PBBs & PBDEs

Item	Unit	MDL	Results				Limit
			05	46	47	63	
Polybrominated Biphenyls (PBBs)							
Monobromobiphenyl	mg/kg	5	N.D.	N.D.	N.D.	N.D.	
Dibromobiphenyl	mg/kg	5	N.D.	N.D.	N.D.	N.D.	
Tribromobiphenyl	mg/kg	5	N.D.	N.D.	N.D.	N.D.	
Tetrabromobiphenyl	mg/kg	5	N.D.	N.D.	N.D.	N.D.	
Pentabromobiphenyl	mg/kg	5	N.D.	N.D.	N.D.	N.D.	
Hexabromobiphenyl	mg/kg	5	N.D.	N.D.	N.D.	N.D.	
Heptabromobiphenyl	mg/kg	5	N.D.	N.D.	N.D.	N.D.	
Octabromobiphenyl	mg/kg	5	N.D.	N.D.	N.D.	N.D.	
Nonabromodiphenyl	mg/kg	5	N.D.	N.D.	N.D.	N.D.	
Decabromodiphenyl	mg/kg	5	N.D.	N.D.	N.D.	N.D.	
Total content	mg/kg	/	N.D.	N.D.	N.D.	N.D.	1000
Polybrominated Diphenylethers (PBDEs)(Mon-Deca)							
Monobromodiphenyl ether	mg/kg	5	N.D.	N.D.	N.D.	N.D.	
Dibromodiphenyl ether	mg/kg	5	N.D.	N.D.	N.D.	N.D.	
Tribromodiphenyl ether	mg/kg	5	N.D.	N.D.	N.D.	N.D.	
Tetrabromodiphenyl ether	mg/kg	5	N.D.	N.D.	N.D.	N.D.	
Pentabromodiphenyl ether	mg/kg	5	N.D.	N.D.	N.D.	N.D.	
Hexabromodiphenyl ether	mg/kg	5	N.D.	N.D.	N.D.	N.D.	
Heptabromodiphenyl ether	mg/kg	5	N.D.	N.D.	N.D.	N.D.	
Octabromodiphenyl ether	mg/kg	5	N.D.	N.D.	N.D.	N.D.	
Nonabromodiphenyl ether	mg/kg	5	N.D.	N.D.	N.D.	N.D.	
Decabromodiphenyl ether	mg/kg	5	N.D.	N.D.	N.D.	N.D.	
Total content	mg/kg	/	N.D.	N.D.	N.D.	N.D.	1000



TEST REPORT

Report No.: AZT032011190023C-010

Page 21 of 41

Item	Unit	MDL	Results				Limit
			77	79	82	83	
Polybrominated Biphenyls (PBBs)							
Monobromobiphenyl	mg/kg	5	N.D.	N.D.	N.D.	N.D.	
Dibromobiphenyl	mg/kg	5	N.D.	N.D.	N.D.	N.D.	
Tribromobiphenyl	mg/kg	5	N.D.	N.D.	N.D.	N.D.	
Tetrabromobiphenyl	mg/kg	5	N.D.	N.D.	N.D.	N.D.	
Pentabromobiphenyl	mg/kg	5	N.D.	N.D.	N.D.	N.D.	
Hexabromobiphenyl	mg/kg	5	N.D.	N.D.	N.D.	N.D.	
Heptabromobiphenyl	mg/kg	5	N.D.	N.D.	N.D.	N.D.	
Octabromobiphenyl	mg/kg	5	N.D.	N.D.	N.D.	N.D.	
Nonabromodiphenyl	mg/kg	5	N.D.	N.D.	N.D.	N.D.	
Decabromodiphenyl	mg/kg	5	N.D.	N.D.	N.D.	N.D.	
Total content	mg/kg	/	N.D.	N.D.	N.D.	N.D.	1000
Polybrominated Diphenylethers (PBDEs)(Mon-Deca)							
Monobromodiphenyl ether	mg/kg	5	N.D.	N.D.	N.D.	N.D.	
Dibromodiphenyl ether	mg/kg	5	N.D.	N.D.	N.D.	N.D.	
Tribromodiphenyl ether	mg/kg	5	N.D.	N.D.	N.D.	N.D.	
Tetrabromodiphenyl ether	mg/kg	5	N.D.	N.D.	N.D.	N.D.	
Pentabromodiphenyl ether	mg/kg	5	N.D.	N.D.	N.D.	N.D.	
Hexabromodiphenyl ether	mg/kg	5	N.D.	N.D.	N.D.	N.D.	
Heptabromodiphenyl ether	mg/kg	5	N.D.	N.D.	N.D.	N.D.	
Octabromodiphenyl ether	mg/kg	5	N.D.	N.D.	N.D.	N.D.	
Nonabromodiphenyl ether	mg/kg	5	N.D.	N.D.	N.D.	N.D.	
Decabromodiphenyl ether	mg/kg	5	N.D.	N.D.	N.D.	N.D.	
Total content	mg/kg	/	N.D.	N.D.	N.D.	N.D.	1000



TEST REPORT

Report No.: AZT032011190023C-010

Page 22 of 41

Item	Unit	MDL	Results				Limit
			88	91	106	111	
Polybrominated Biphenyls (PBBs)							
Monobromobiphenyl	mg/kg	5	N.D.	N.D.	N.D.	N.D.	
Dibromobiphenyl	mg/kg	5	N.D.	N.D.	N.D.	N.D.	
Tribromobiphenyl	mg/kg	5	N.D.	N.D.	N.D.	N.D.	
Tetrabromobiphenyl	mg/kg	5	N.D.	N.D.	N.D.	N.D.	
Pentabromobiphenyl	mg/kg	5	N.D.	N.D.	N.D.	N.D.	
Hexabromobiphenyl	mg/kg	5	N.D.	N.D.	N.D.	N.D.	
Heptabromobiphenyl	mg/kg	5	N.D.	N.D.	N.D.	N.D.	
Octabromobiphenyl	mg/kg	5	N.D.	N.D.	N.D.	N.D.	
Nonabromodiphenyl	mg/kg	5	N.D.	N.D.	N.D.	N.D.	
Decabromodiphenyl	mg/kg	5	N.D.	N.D.	N.D.	N.D.	
Total content	mg/kg	/	N.D.	N.D.	N.D.	N.D.	1000
Polybrominated Diphenylethers (PBDEs)(Mon-Deca)							
Monobromodiphenyl ether	mg/kg	5	N.D.	N.D.	N.D.	N.D.	
Dibromodiphenyl ether	mg/kg	5	N.D.	N.D.	N.D.	N.D.	
Tribromodiphenyl ether	mg/kg	5	N.D.	N.D.	N.D.	N.D.	
Tetrabromodiphenyl ether	mg/kg	5	N.D.	N.D.	N.D.	N.D.	
Pentabromodiphenyl ether	mg/kg	5	N.D.	N.D.	N.D.	N.D.	
Hexabromodiphenyl ether	mg/kg	5	N.D.	N.D.	N.D.	N.D.	
Heptabromodiphenyl ether	mg/kg	5	N.D.	N.D.	N.D.	N.D.	
Octabromodiphenyl ether	mg/kg	5	N.D.	N.D.	N.D.	N.D.	
Nonabromodiphenyl ether	mg/kg	5	N.D.	N.D.	N.D.	N.D.	
Decabromodiphenyl ether	mg/kg	5	N.D.	N.D.	N.D.	N.D.	
Total content	mg/kg	/	N.D.	N.D.	N.D.	N.D.	1000



TEST REPORT

Report No.: AZT032011190023C-010

Page 23 of 41

Item	Unit	MDL	Results				Limit
			116	127	130	138	
Polybrominated Biphenyls (PBBs)							
Monobromobiphenyl	mg/kg	5	N.D.	N.D.	N.D.	N.D.	
Dibromobiphenyl	mg/kg	5	N.D.	N.D.	N.D.	N.D.	
Tribromobiphenyl	mg/kg	5	N.D.	N.D.	N.D.	N.D.	
Tetrabromobiphenyl	mg/kg	5	N.D.	N.D.	N.D.	N.D.	
Pentabromobiphenyl	mg/kg	5	N.D.	N.D.	N.D.	N.D.	
Hexabromobiphenyl	mg/kg	5	N.D.	N.D.	N.D.	N.D.	
Heptabromobiphenyl	mg/kg	5	N.D.	N.D.	N.D.	N.D.	
Octabromobiphenyl	mg/kg	5	N.D.	N.D.	N.D.	N.D.	
Nonabromodiphenyl	mg/kg	5	N.D.	N.D.	N.D.	N.D.	
Decabromodiphenyl	mg/kg	5	N.D.	N.D.	N.D.	N.D.	
Total content	mg/kg	/	N.D.	N.D.	N.D.	N.D.	1000
Polybrominated Diphenylethers (PBDEs)(Mon-Deca)							
Monobromodiphenyl ether	mg/kg	5	N.D.	N.D.	N.D.	N.D.	
Dibromodiphenyl ether	mg/kg	5	N.D.	N.D.	N.D.	N.D.	
Tribromodiphenyl ether	mg/kg	5	N.D.	N.D.	N.D.	N.D.	
Tetrabromodiphenyl ether	mg/kg	5	N.D.	N.D.	N.D.	N.D.	
Pentabromodiphenyl ether	mg/kg	5	N.D.	N.D.	N.D.	N.D.	
Hexabromodiphenyl ether	mg/kg	5	N.D.	N.D.	N.D.	N.D.	
Heptabromodiphenyl ether	mg/kg	5	N.D.	N.D.	N.D.	N.D.	
Octabromodiphenyl ether	mg/kg	5	N.D.	N.D.	N.D.	N.D.	
Nonabromodiphenyl ether	mg/kg	5	N.D.	N.D.	N.D.	N.D.	
Decabromodiphenyl ether	mg/kg	5	N.D.	N.D.	N.D.	N.D.	
Total content	mg/kg	/	N.D.	N.D.	N.D.	N.D.	1000



TEST REPORT

Report No.: AZT032011190023C-010

Page 24 of 41

Item	Unit	MDL	Results			Limit
			148	150	179	
Polybrominated Biphenyls (PBBs)						
Monobromobiphenyl	mg/kg	5	N.D.	N.D.	N.D.	
Dibromobiphenyl	mg/kg	5	N.D.	N.D.	N.D.	
Tribromobiphenyl	mg/kg	5	N.D.	N.D.	N.D.	
Tetrabromobiphenyl	mg/kg	5	N.D.	N.D.	N.D.	
Pentabromobiphenyl	mg/kg	5	N.D.	N.D.	N.D.	
Hexabromobiphenyl	mg/kg	5	N.D.	N.D.	N.D.	
Heptabromobiphenyl	mg/kg	5	N.D.	N.D.	N.D.	
Octabromobiphenyl	mg/kg	5	N.D.	N.D.	N.D.	
Nonabromodiphenyl	mg/kg	5	N.D.	N.D.	N.D.	
Decabromodiphenyl	mg/kg	5	N.D.	N.D.	N.D.	
Total content	mg/kg	/	N.D.	N.D.	N.D.	1000
Polybrominated Diphenylethers (PBDEs)(Mon-Deca)						
Monobromodiphenyl ether	mg/kg	5	N.D.	N.D.	N.D.	
Dibromodiphenyl ether	mg/kg	5	N.D.	N.D.	N.D.	
Tribromodiphenyl ether	mg/kg	5	N.D.	N.D.	N.D.	
Tetrabromodiphenyl ether	mg/kg	5	N.D.	N.D.	N.D.	
Pentabromodiphenyl ether	mg/kg	5	N.D.	N.D.	N.D.	
Hexabromodiphenyl ether	mg/kg	5	N.D.	N.D.	N.D.	
Heptabromodiphenyl ether	mg/kg	5	N.D.	N.D.	N.D.	
Octabromodiphenyl ether	mg/kg	5	N.D.	N.D.	N.D.	
Nonabromodiphenyl ether	mg/kg	5	N.D.	N.D.	N.D.	
Decabromodiphenyl ether	mg/kg	5	N.D.	N.D.	N.D.	
Total content	mg/kg	/	N.D.	N.D.	N.D.	1000

Remark:

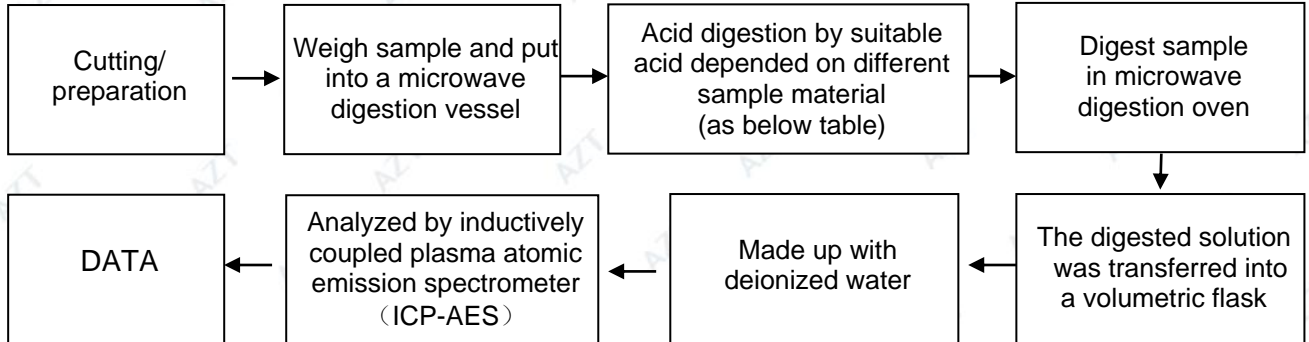
- mg/kg = ppm
- N.D. = Not detected
- MDL=Method detected limited
- Flow chart appendix is included
- Photo appendix is included.



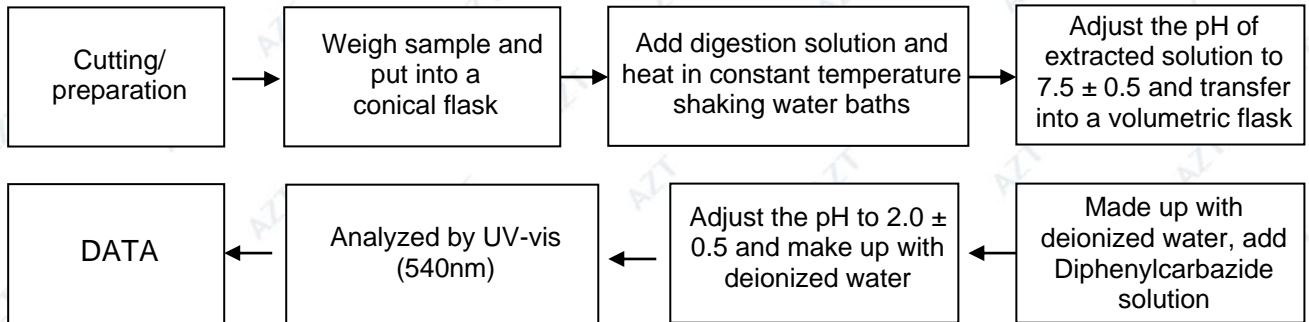
TEST REPORT

Appendix

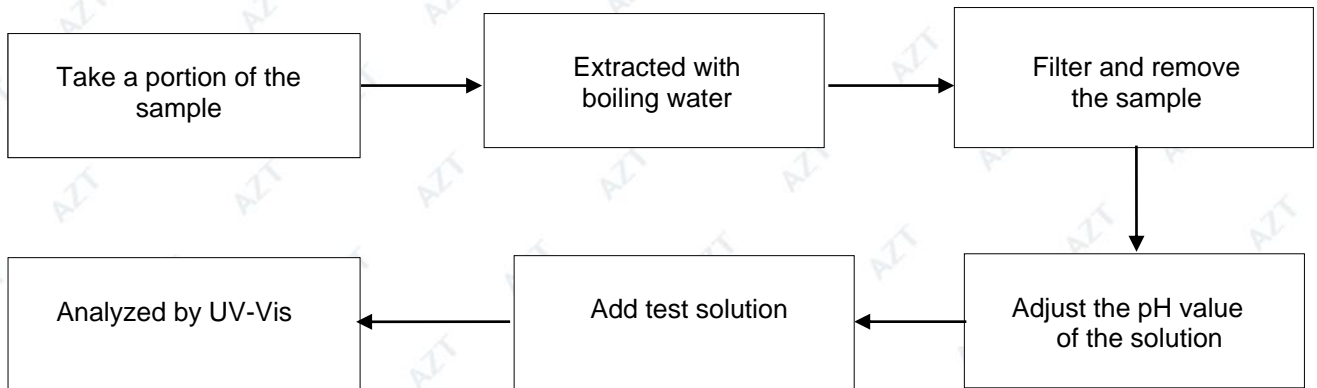
1. Test Flow chart for Cd/Pb /Hg content



2. Test Flowchart for Cr⁶⁺ content (For non-metal material)



Test Flowchart for Cr⁶⁺ content (For metal material)



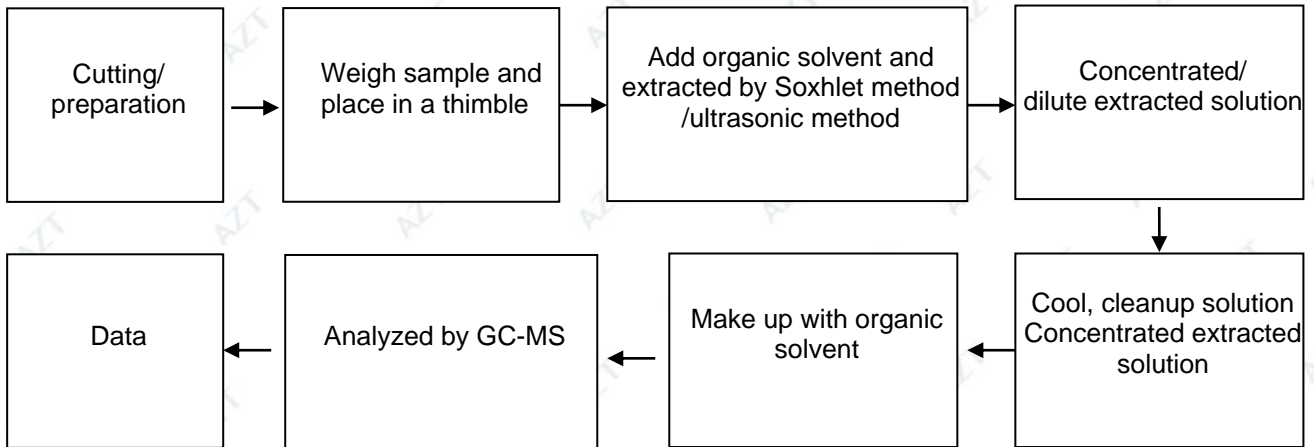


TEST REPORT

Report No.: AZT032011190023C-010

Page 26 of 41

3. Test Flow chart for PBBs & PBDEs & DBP & BBP & DEHP & DIBP content



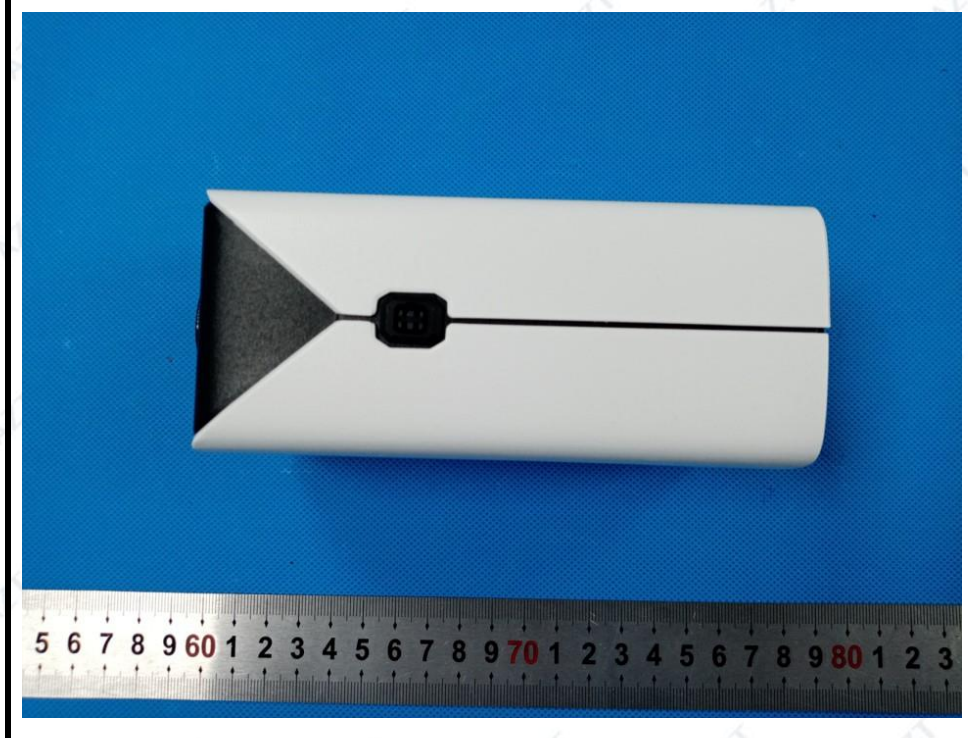
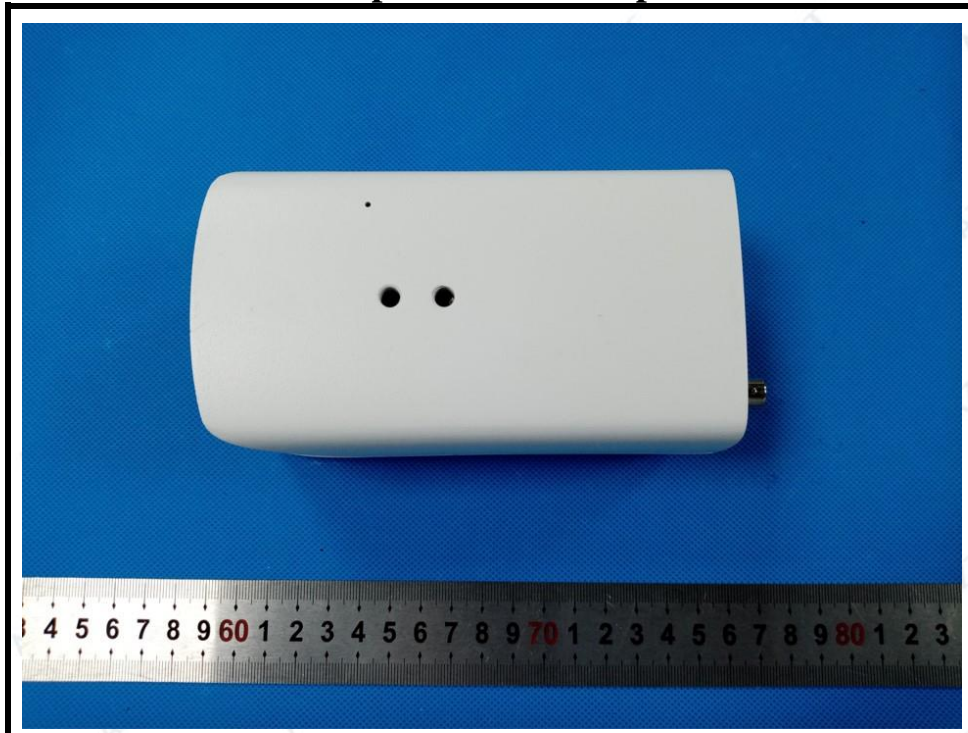


TEST REPORT

Report No.: AZT032011190023C-010

Page 27 of 41

The photo of the sample



TEST REPORT

Report No.: AZT032011190023C-010

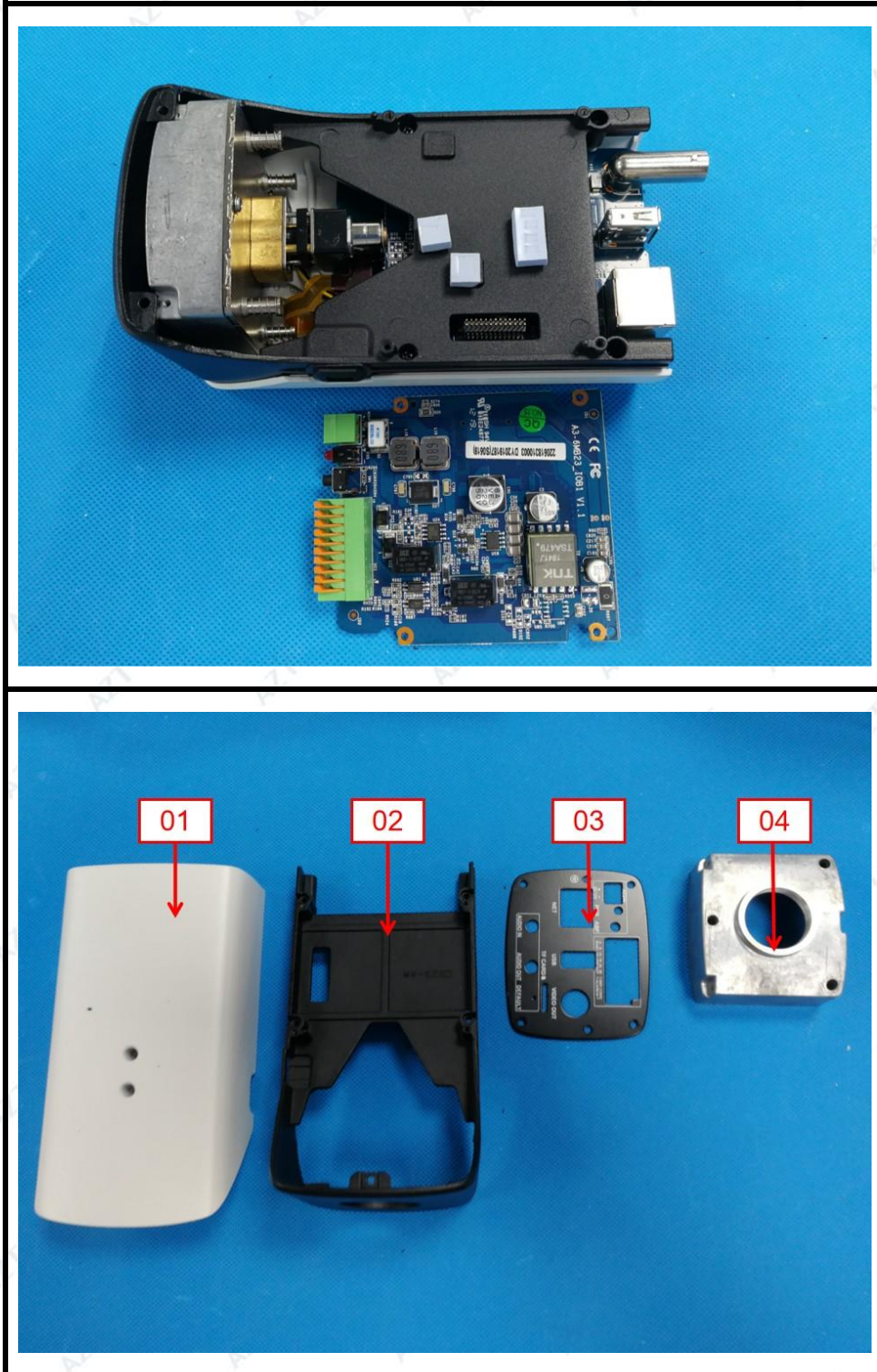
Page 28 of 41



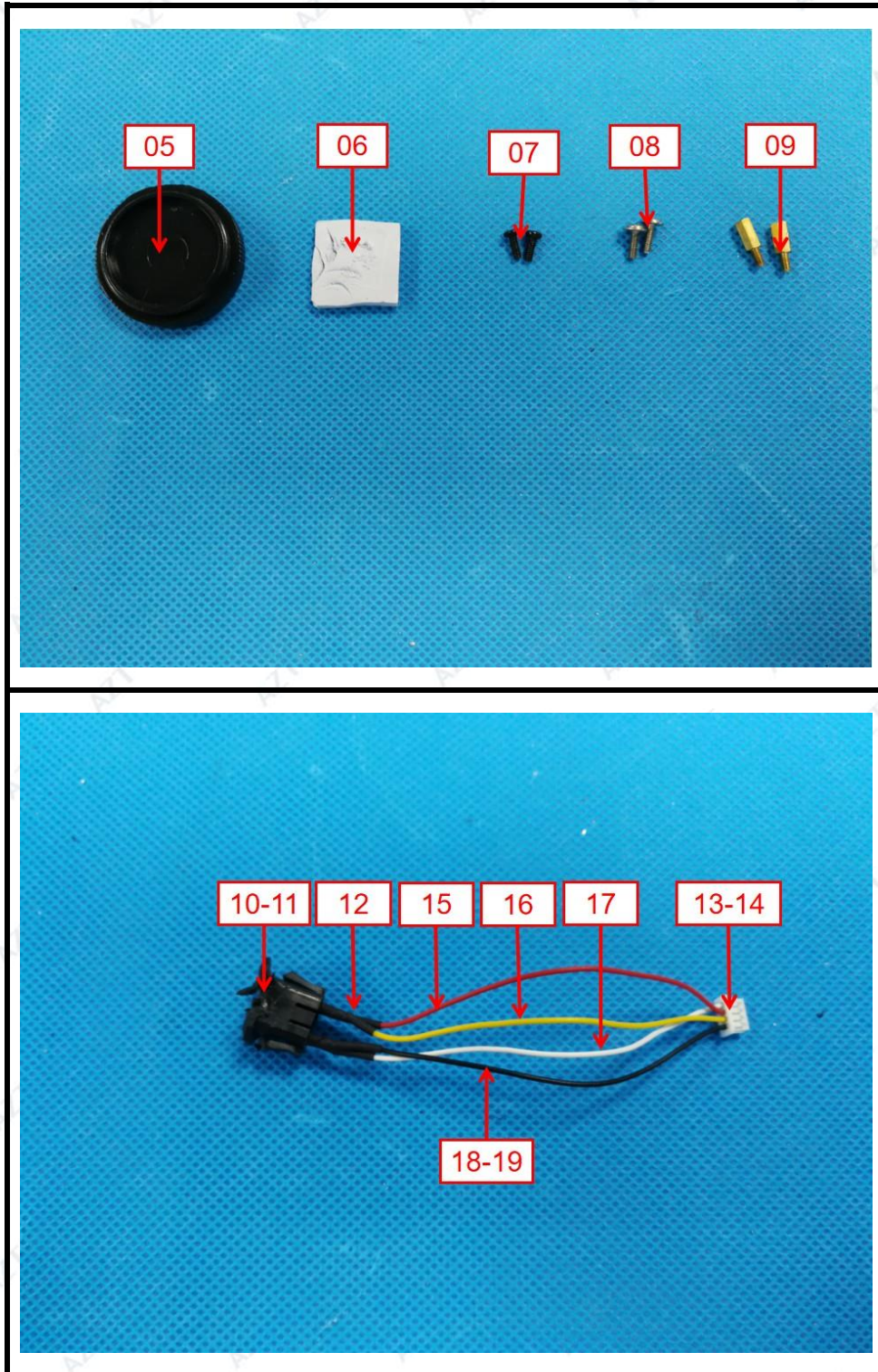
TEST REPORT

Report No.: AZT032011190023C-010

Page 29 of 41



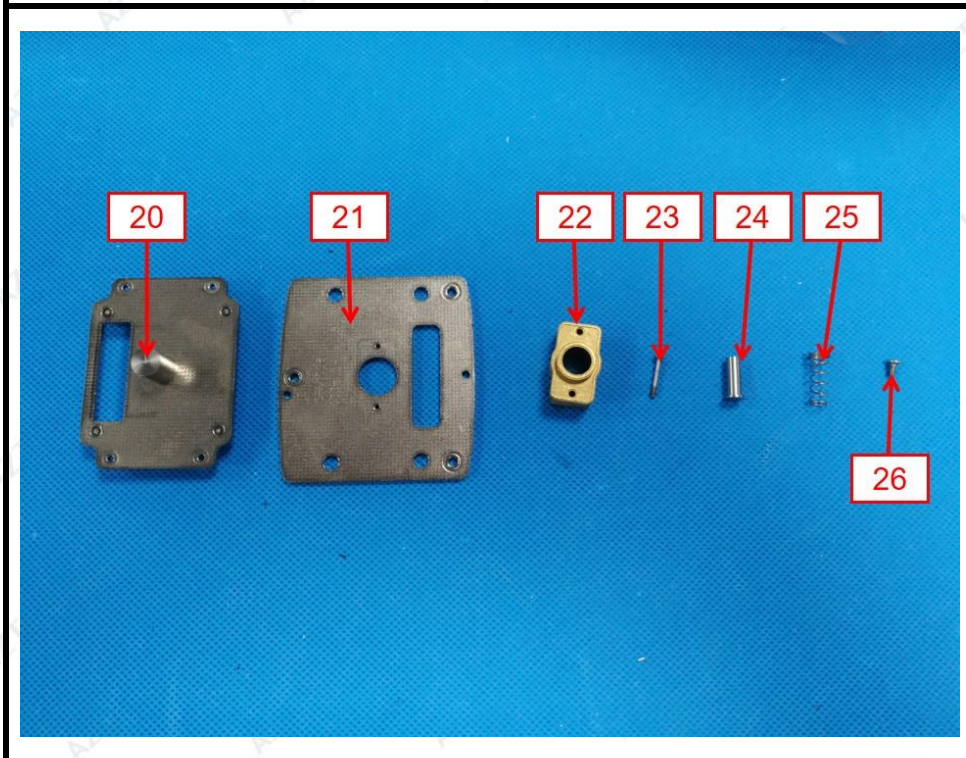
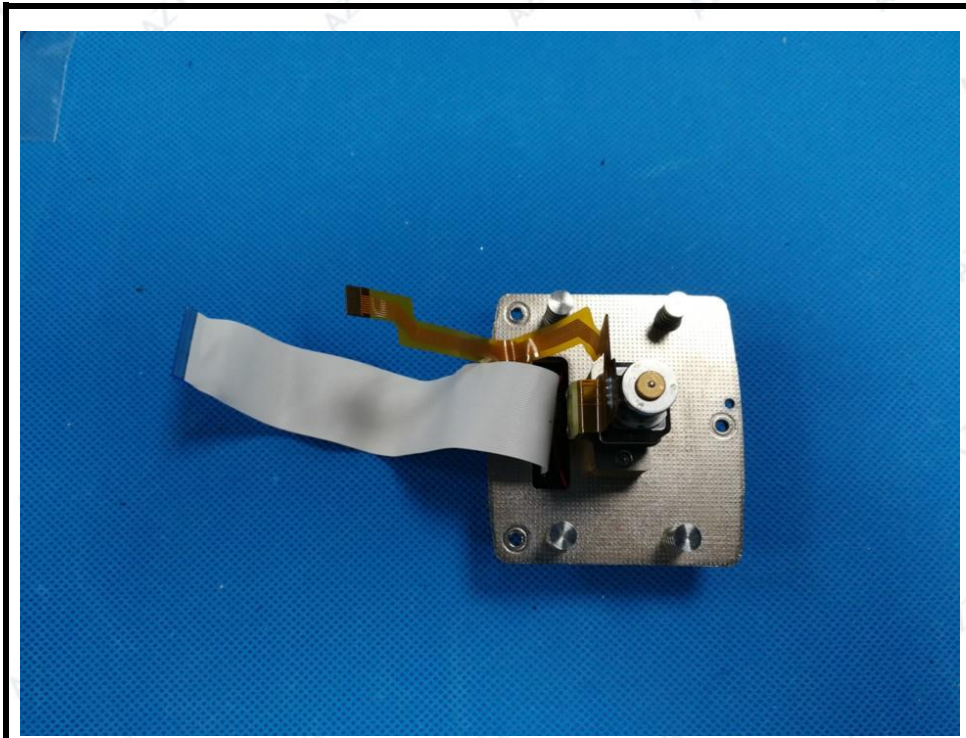
TEST REPORT



TEST REPORT

Report No.: AZT032011190023C-010

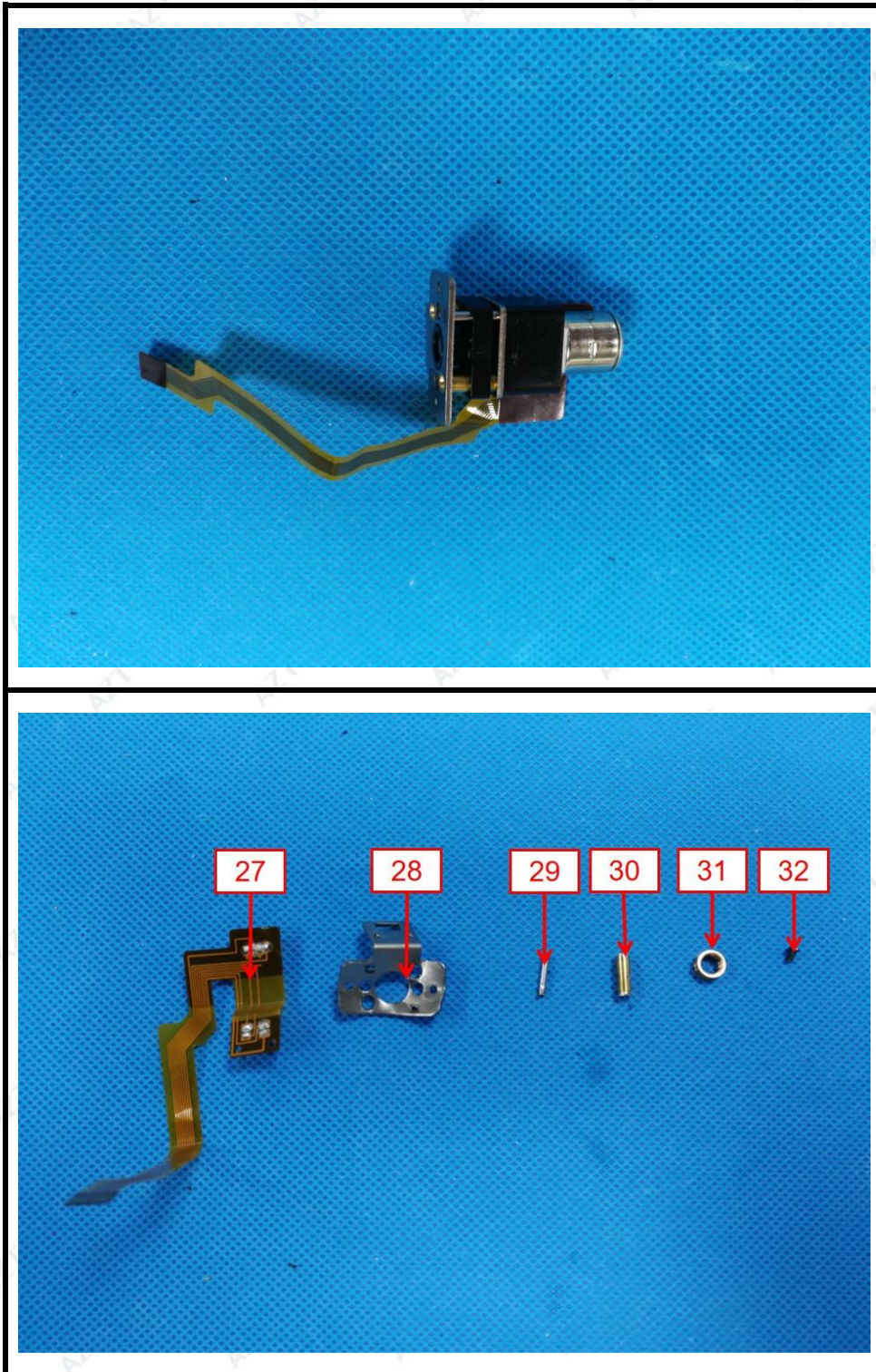
Page 31 of 41



TEST REPORT

Report No.: AZT032011190023C-010

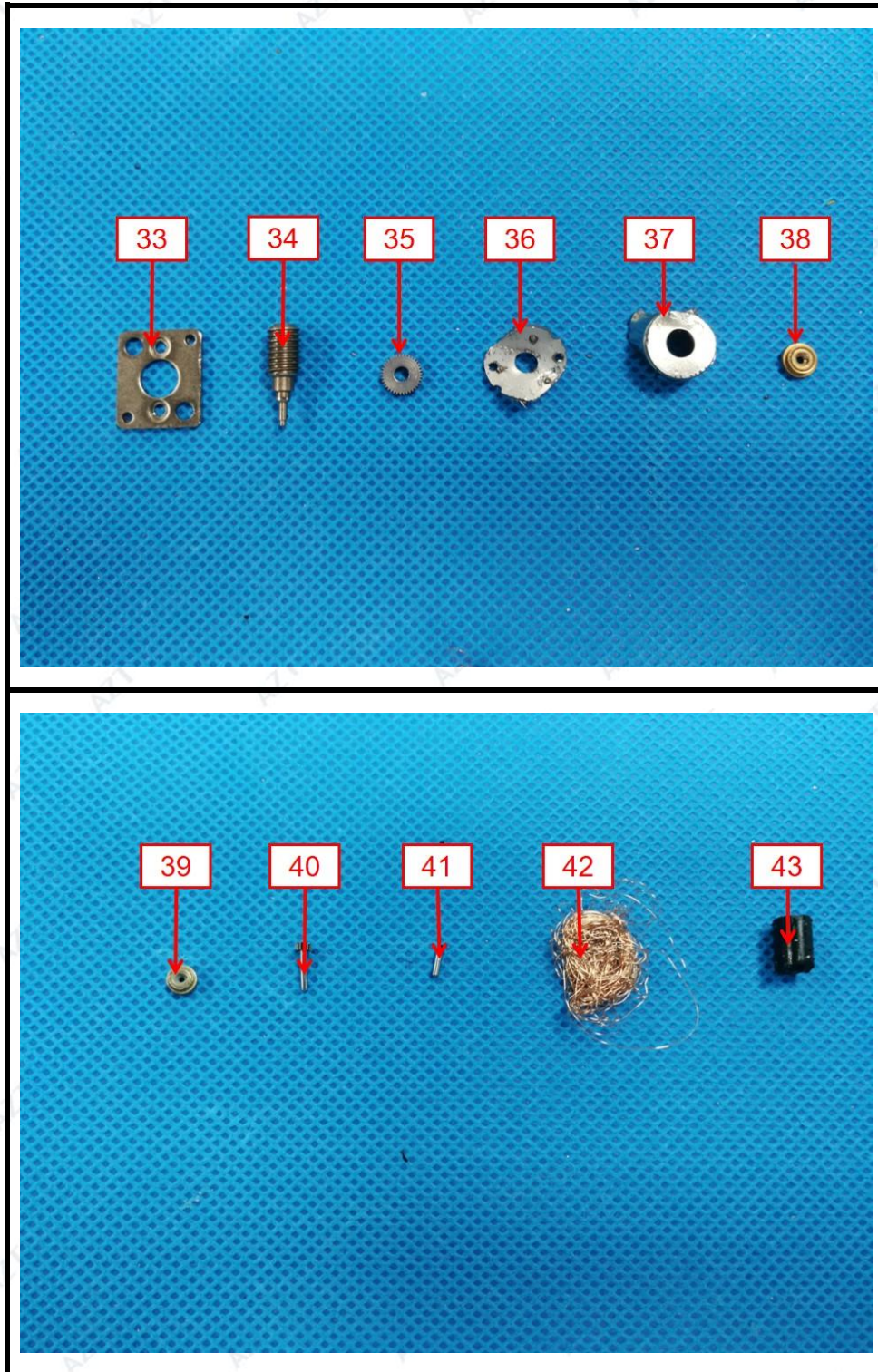
Page 32 of 41



TEST REPORT

Report No.: AZT032011190023C-010

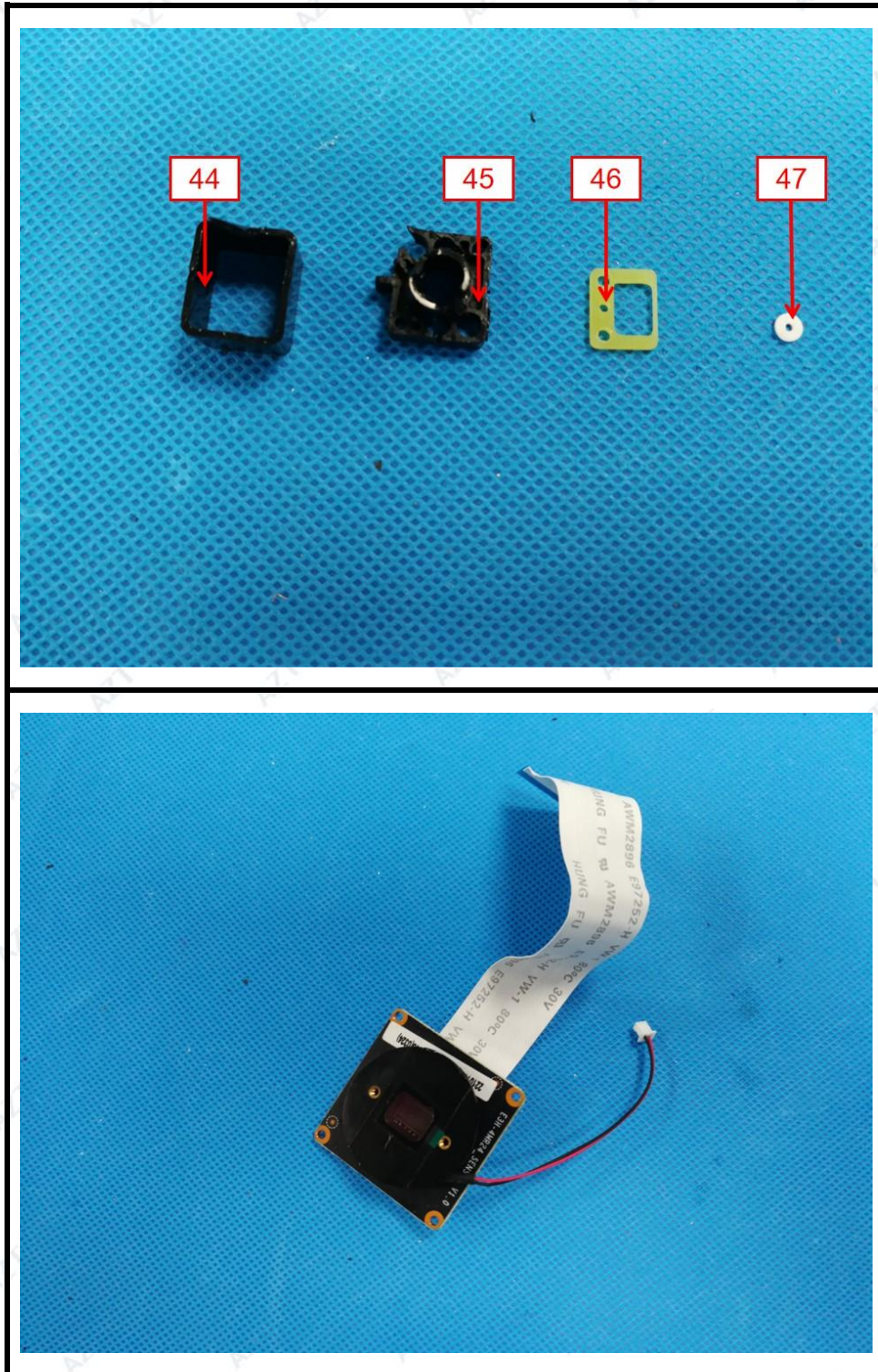
Page 33 of 41



TEST REPORT

Report No.: AZT032011190023C-010

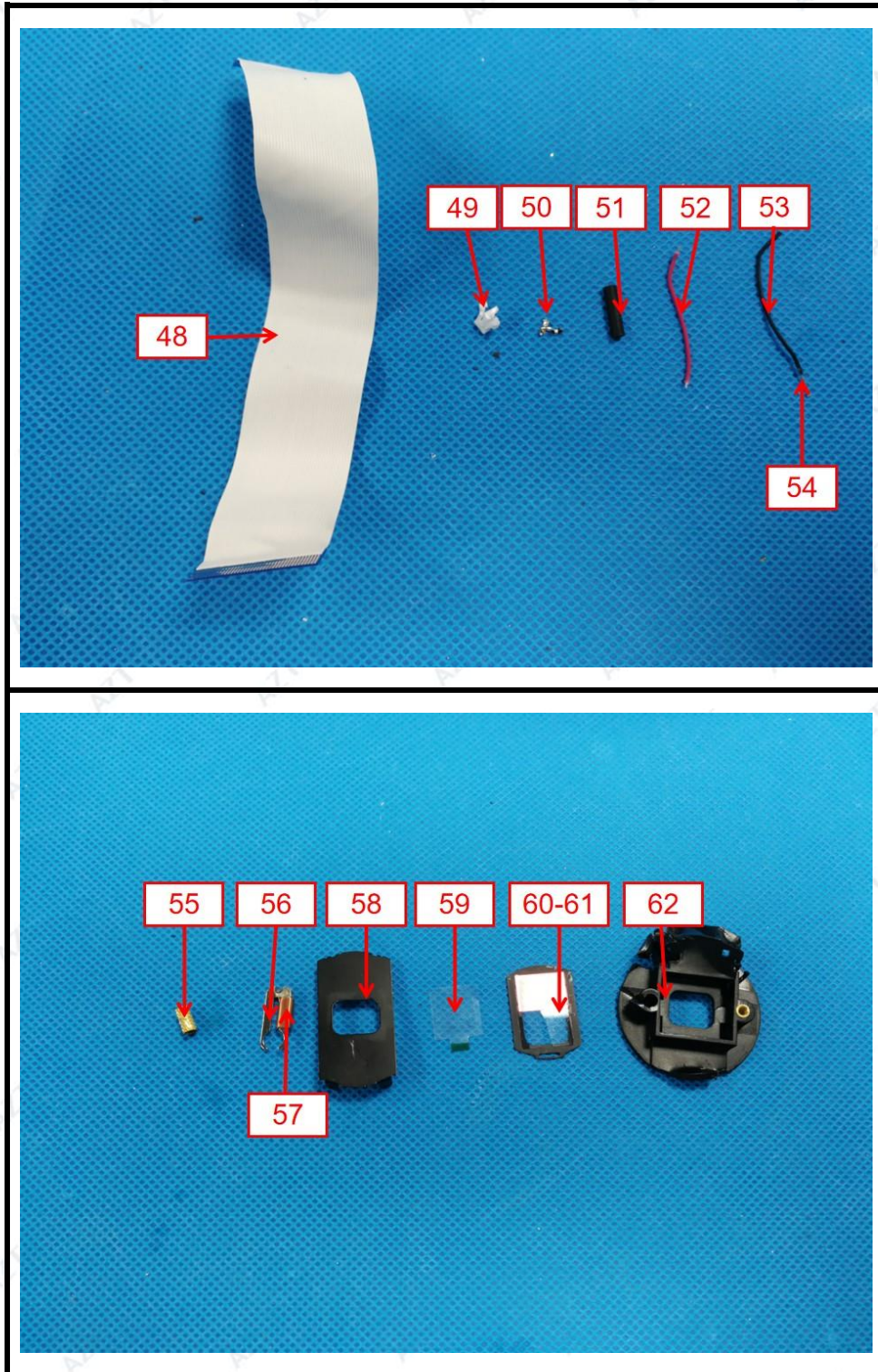
Page 34 of 41



TEST REPORT

Report No.: AZT032011190023C-010

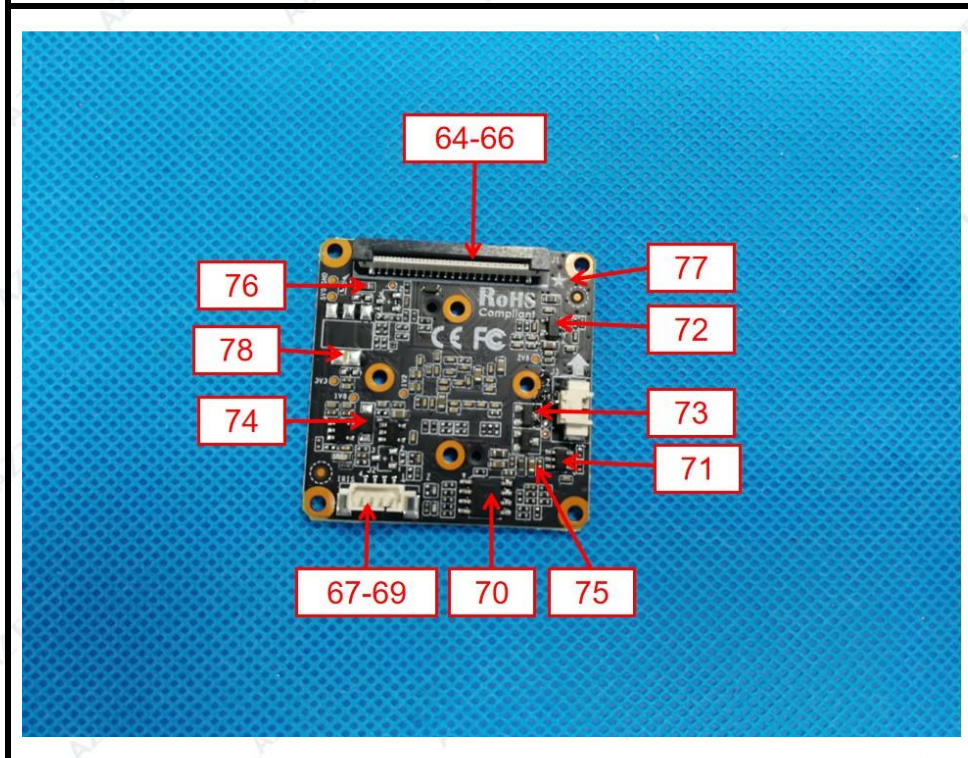
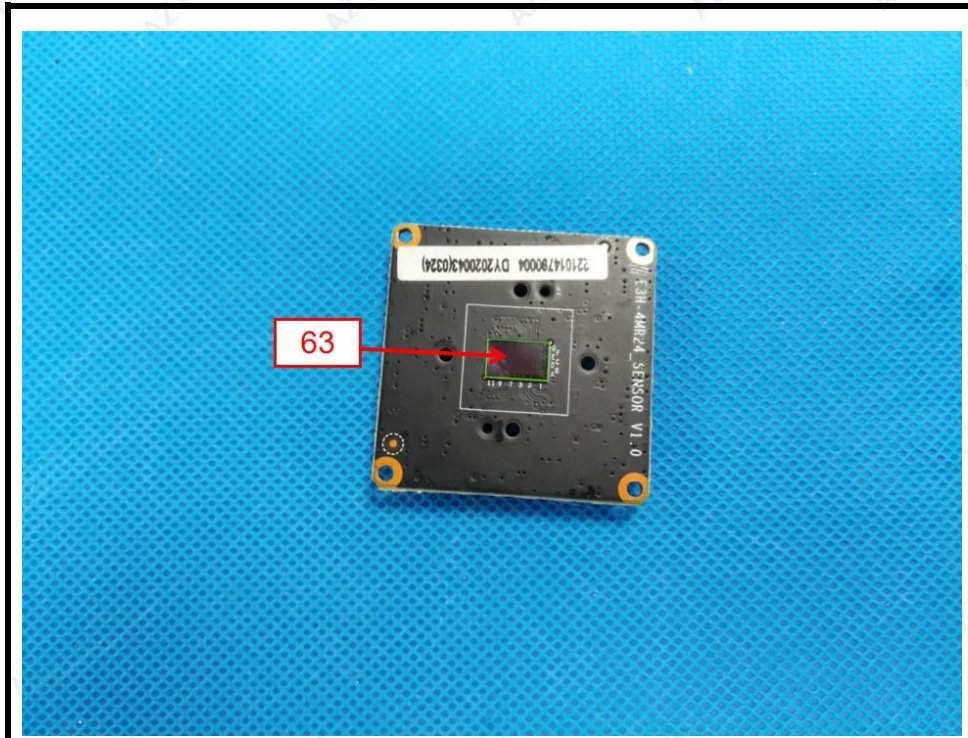
Page 35 of 41



TEST REPORT

Report No.: AZT032011190023C-010

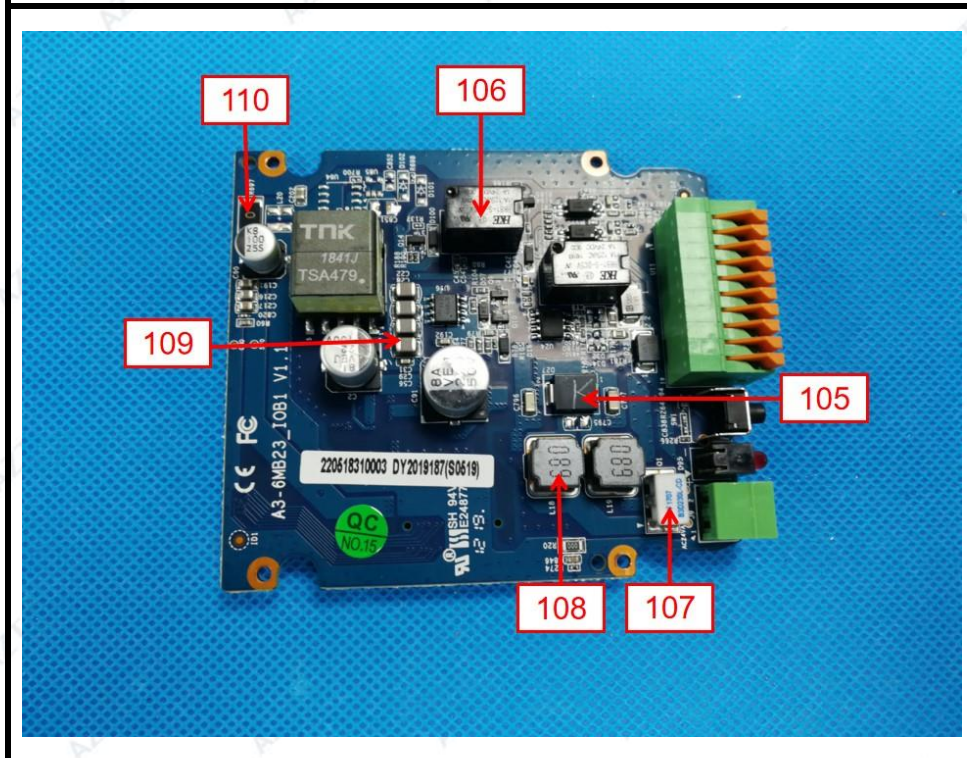
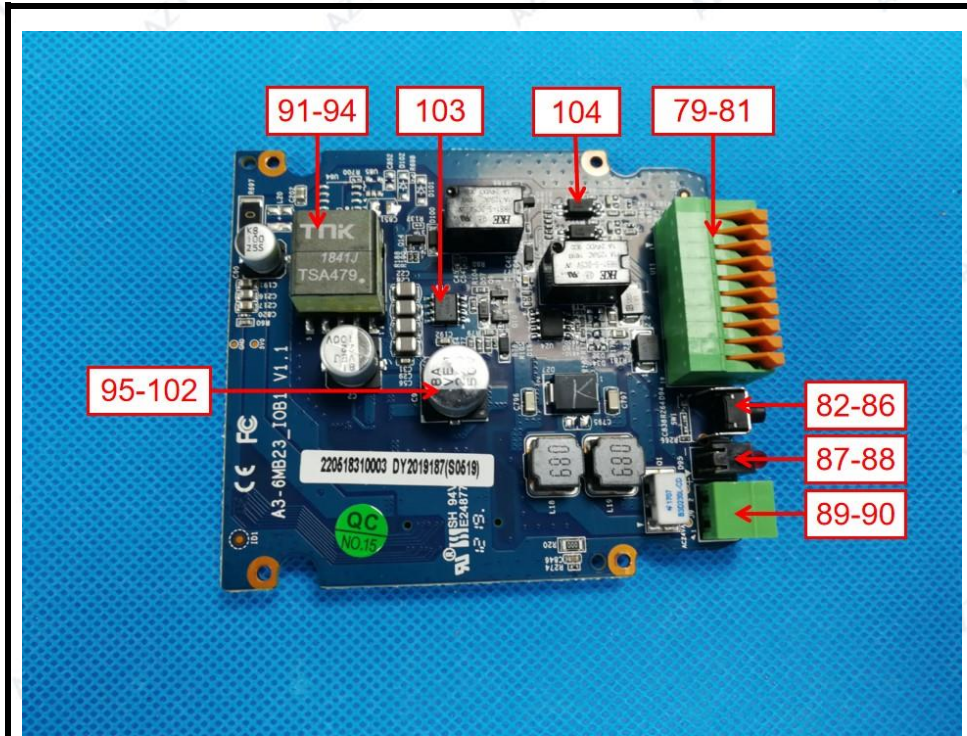
Page 36 of 41



TEST REPORT

Report No.: AZT032011190023C-010

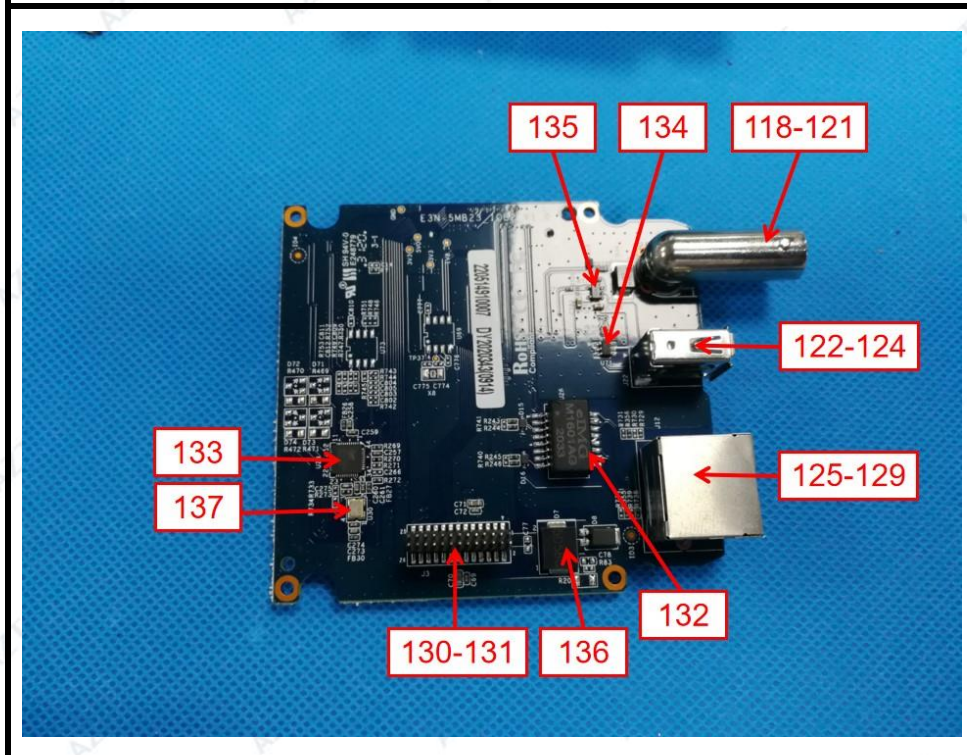
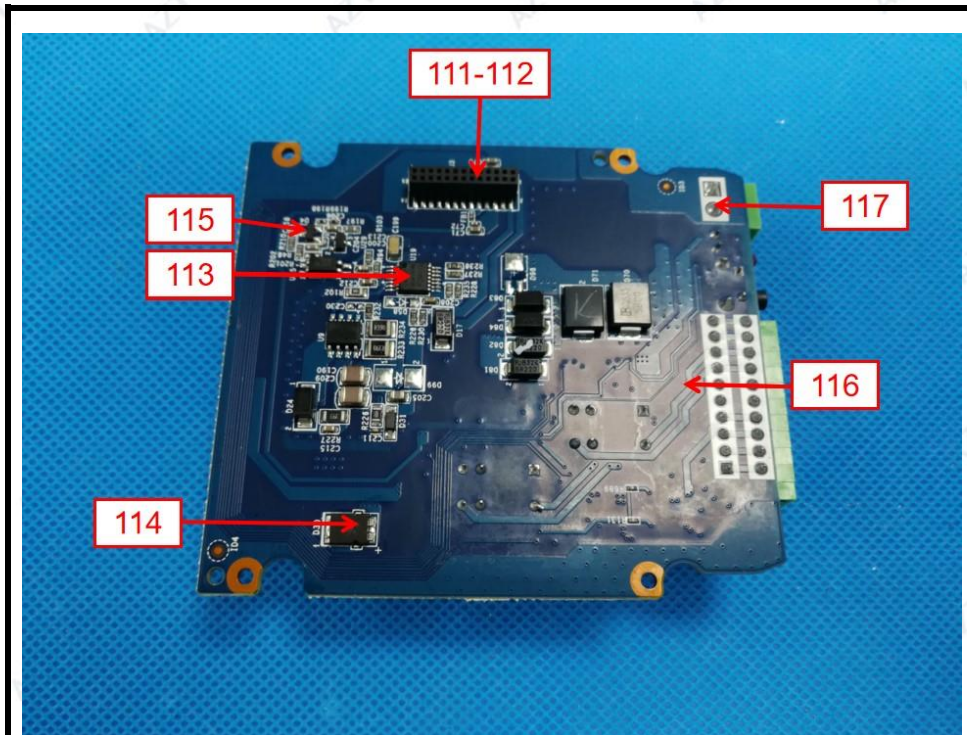
Page 37 of 41



TEST REPORT

Report No.: AZT032011190023C-010

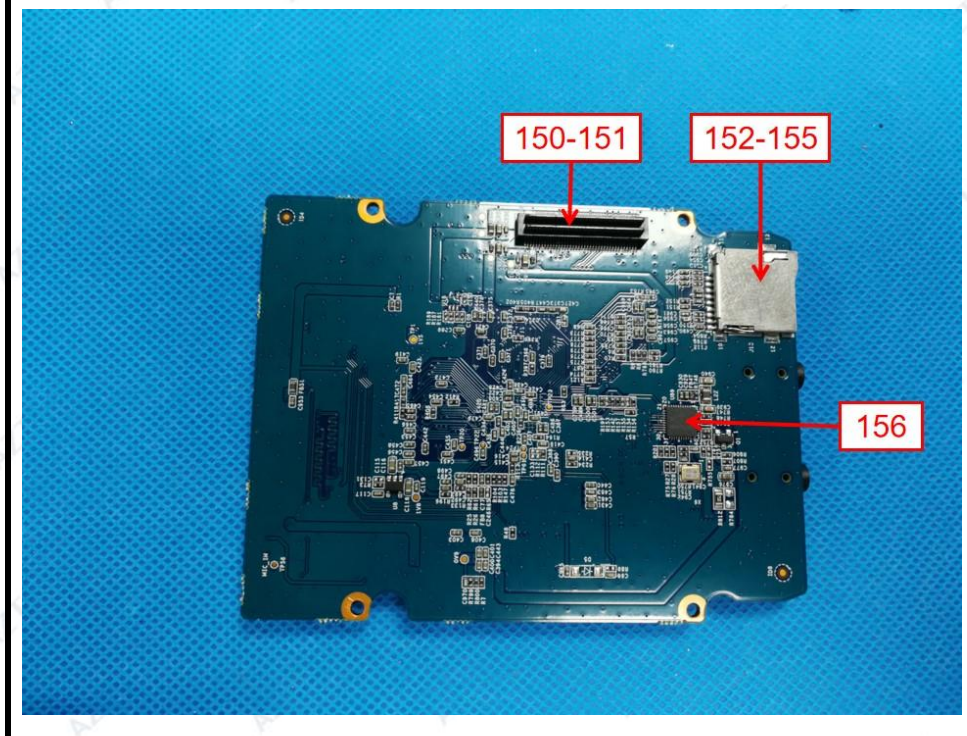
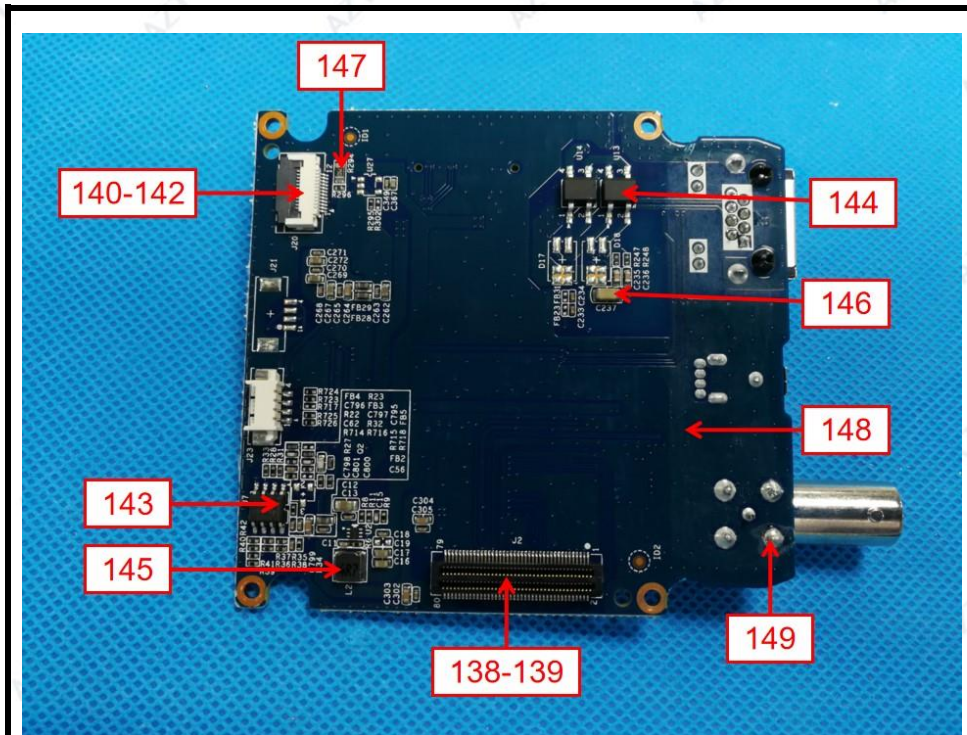
Page 38 of 41



TEST REPORT

Report No.: AZT032011190023C-010

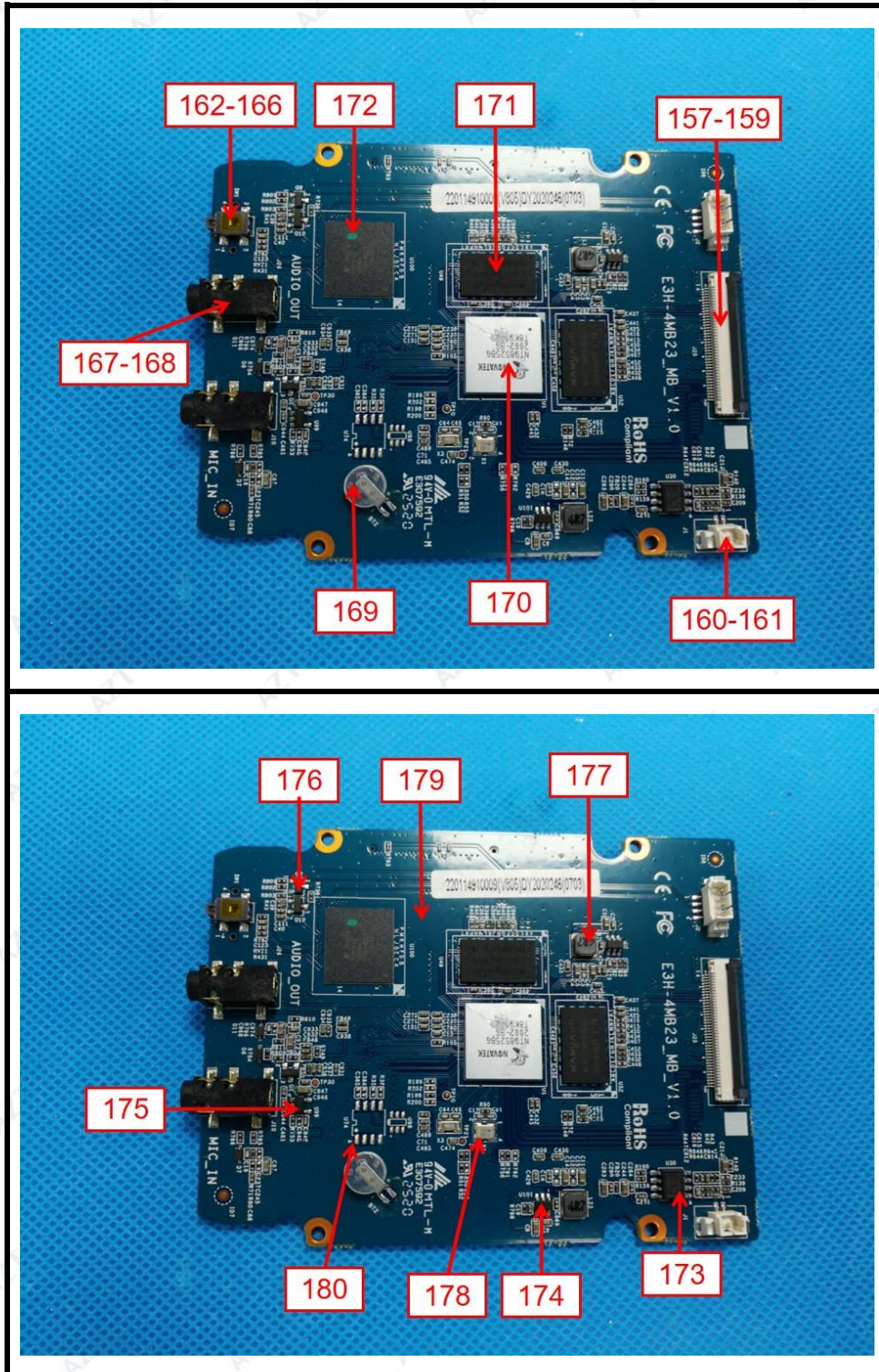
Page 39 of 41



TEST REPORT

Report No.: AZT032011190023C-010

Page 40 of 41



***** End of Report *****



TEST REPORT

Report No.: AZT032011190023C-010

Page 41 of 41

Statement:

1. The test report is considered invalidated without approval signature, special seal on the perforation.
2. The result(s) shown in this report refer only to the sample(s) tested.
3. Without written approval of AZT, this report can't be reproduced except in full.
4. The sample(s) and sample information was/were provided by the client who should be responsible for the authenticity which AZT hasn't verified.
5. In case of any discrepancy between the English version and Chinese version of the testing reports(if generated), the Chinese version shall prevail.

